

# **The ISC Inshore Series 2010**

Comprising the  
Christchurch Bay Race Sun 9<sup>th</sup> May

Solent Race Sun 18<sup>th</sup> July

Nab Tower Race Sat 11<sup>th</sup> September  
(Including SCRA IRC Solent Series Race 5)

Patron

Her Majesty The Queen

Admiral

R.A.Aisher, OBE

Commodore

Mr W G Pimlott

Vice Commodore

Mr A Munds

Rear Commodores

Mrs S Mayes

Mr P Lambie

**Island Sailing Club**  
**SAILING INSTRUCTIONS**  
**2010 Inshore Series**

comprising the

**CHRISTCHURCH BAY RACE**  
**SOLENT RACE**  
**and**  
**NAB TOWER RACE**  
(Inc. SCRA IRC Solent Series Race 5)

All times are BST

HW PORTSMOUTH:	Sunday	9 <sup>th</sup> May	0837 BST
	Sunday	18 <sup>th</sup> July	0445 BST
	Saturday	11th Sept	1408 BST

**1 RULES**

1.1 The series of races will be governed by the 'rules' as defined in *The Racing Rules of Sailing*, together with, as appropriate:

1.1.1 The ISAF Offshore Special Regulations for Category 4, as amended by the Notice of Race.

1.1.2 The IRC Rules Parts 1, 2 & 3 – including sail limitations.

1.1.3 The Island Sailing Club Rating System (ISCRS)

1.2 Boats must not anchor or kedge within the area between Stone Point and Gurnard Bay as indicated on the SCRA racing chart Admiralty Chart 2040. Gas and water pipes, telephone cables and electricity cables carrying 133,000 volts lie on the surface of the sea bed.

1.3 Boats in whatever direction they are racing shall not pass to the north of:

1.3.1 Horse Sand Fort.

1.3.2 The obstructions on the row of iron piles off Durns Point, east of Lymington.

1.4 The 'Moving Prohibited Zone' referred to in Associated British Ports Byelaw 11 shall rank as an obstruction to boats racing (See diagram).

**2 NOTICES TO COMPETITORS**

Notices to competitors will be posted on the Island Sailing Club Website ([www.islandsc.org.uk/iscinshore.aspx](http://www.islandsc.org.uk/iscinshore.aspx)) and The Official Notice Board located in the Island Sailing Club Lower Marquee.

### 3 CHANGES TO SAILING INSTRUCTIONS

Any changes to the sailing instructions will be posted not less than two hours before the advertised starting times of the race or races concerned. Changes in the sailing instructions will be indicated by displaying code flag "L" from the ISC Flagstaff together with the numeral pennant denoting the latest amendment. It is the responsibility of all competitors to obtain the amended written instructions from The Official Notice Board or website.

### 4 SIGNALS MADE ASHORE

Signals will be displayed on the Island Sailing Club flagstaff.

### 5 SCHEDULE OF RACES

#### 5.1 CHRISTCHURCH BAY RACE – 9<sup>th</sup> MAY

Class	Flag	Warning	Start
IRC Rated	Numeral Pennant 1	0815	0820
ISCRS	Numeral Pennant 2	0825	0830
Laser SB3	Numeral Pennant 3	0835	0840

#### 5.2 SOLENT RACE – 18th JULY

Class	Flag	Warning	Start
IRC Rated	Numeral Pennant 1	0955	1000
ISCRS	Numeral Pennant 2	1005	1010
Laser SB3	Numeral Pennant 3	1015	1020

#### 5.3 NAB TOWER RACE – 11<sup>th</sup> SEPT

Class	Flag	Warning	Start
IRC Rated	Numeral Pennant 1	0755	0800
ISCRS	Numeral Pennant 2	0805	0810
Laser SB3	Numeral Pennant 3	0815	0820

### 6 RACING AREA

The Solent, Christchurch Bay and Hayling Bay

### 7 THE COURSES

7.1 The course will consist of a series of fixed marks. The course will be displayed in the frame on the Clubhouse roof next to the Race Box. The course is indicated by letters, numbers or symbols, reading from left to right, top to bottom. The course may be announced on VHF Channel 37A (M) before and/or after the warning signal for each class.

7.1.1 An ORANGE or RED letter, number or symbol indicates the mark shall be left to PORT.

7.1.2 A YELLOW or GREEN letter, number or symbol indicates the mark shall be left to STARBOARD.

## 8 MARKS

Marks used will be fixed navigation buoys or racing marks chosen from the *Marks and Symbols* document available at: [www.islandsc.org.uk/racingdocuments.aspx](http://www.islandsc.org.uk/racingdocuments.aspx) and the race mark charts "*Central Solent*" and "*East and West Solent*"

## 9 THE START

### 9.1 Starting Line

The Starting Line will be the extension of a line through the two Club Flagstaffs, each bearing an orange panel with a black cross.

### 9.2 The Outer Distance Mark

The outer distance mark (ODM) is a specially laid orange inflatable buoy. If for any reason this buoy is not laid, the ODM will be the yellow cylindrical buoy, Trinity House buoy, if starting to the west, or Prince Consort Buoy, if starting to the east.

### 9.3 Inner Limit Mark

An Inner Limit Mark will, if laid, be a black inflatable buoy. If laid, boats shall pass between it and the ODM when approaching to start.

### 9.4 Starting Procedure

A boat starting later than 10 minutes after her start shall be scored DNS.

## 10 THE FINISH

10.1 The finishing line will be the line between the rear Club Flagstaff and the yellow cylindrical Trinity House mooring buoy.

10.2 Boats shall keep well clear of the finishing line after finishing.

## 11 PENALTY SYSTEM

A boat that is OCS will be scored with a time penalty of 5% of the boat's elapsed time, rounded to the nearest second, unless the Race Committee decides that she has gained a significant advantage, in which case she shall be scored as OCS. This changes RRS Appendix 4.2

## 12 TIME LIMITS

12.1 RRS 35 will not apply.

12.2 The time limit for all boats in the Christchurch Bay Race will be **1800**

The time limit for all boats in the Solent Race will be **1700**

The time limit for all boats in the Nab Tower Race will be **1800**

12.3 When no boat finishes within the time limit, the race will be abandoned and will not be re-sailed.

### **13 PROTESTS AND REQUESTS FOR REDRESS**

Protests shall be lodged at the Race Office at the ISC not later than two hours after the protesting boat has finished racing for the day or within 1 hour of the race time limit, whichever is the earlier. The time and place of any hearing will be displayed on the official notice board. It is the responsibility of both the protestor and protestee to establish the time and place of the hearing. Protest hearings will normally take place on the day of the race.

### **14 SCORING**

14.1 Boats will be placed in sequence from the shortest corrected time after the elapsed time has been multiplied by the relevant correction factor.

14.2 Laser SB3's will be placed in sequence based on elapsed times only

14.3 All races are to count towards series prizes. This changes RRS Appendix A2.

### **15 SAFETY REGULATIONS**

Boats are requested to advise the Race Committee of their retirement as soon as possible, either by VHF Radio on channel 37A (M) or by telephone to 01983 249436 (or if no answer 01983 249434)

### **16 EQUIPMENT AND MEASUREMENT CHECKS**

16.1 Upon demand the boat's valid measurement or rating certificate shall be presented at the Race Office

16.2 No new or amended ratings or handicaps will be accepted after 1200hrs three working days before each scheduled race.

16.3 Boats may be subject to inspection before or after the race at the discretion of the Race Committee.

### **17 RADIO COMMUNICATION**

The Race Committee may communicate race information to competitors on VHF Channel 37A (M). No acknowledgement to these announcements will be required and return traffic may not be acknowledged.

### **18 PRIZES**

Trophies and prizes will be presented at the Island Sailing Club as soon as possible after the Nab Tower Race on September 11th.

### **19 DISCLAIMER OF LIABILITY**

The Island Sailing Club is providing these races only on the understanding that the Club and its representatives shall not be liable for any loss, damage, death or personal injury howsoever caused to the owner/competitor, his skipper or crew, as a result of their taking part in the race. Moreover, every owner/competitor warrants the suitability of his boat for the race. The safety of a boat and her entire management, including insurance, shall be the sole responsibility of the owner/competitor who must ensure that the boat is fully found, thoroughly seaworthy and manned by a crew of sufficient number and experience who are physically fit to face bad weather. The owner/competitor must be satisfied as to the

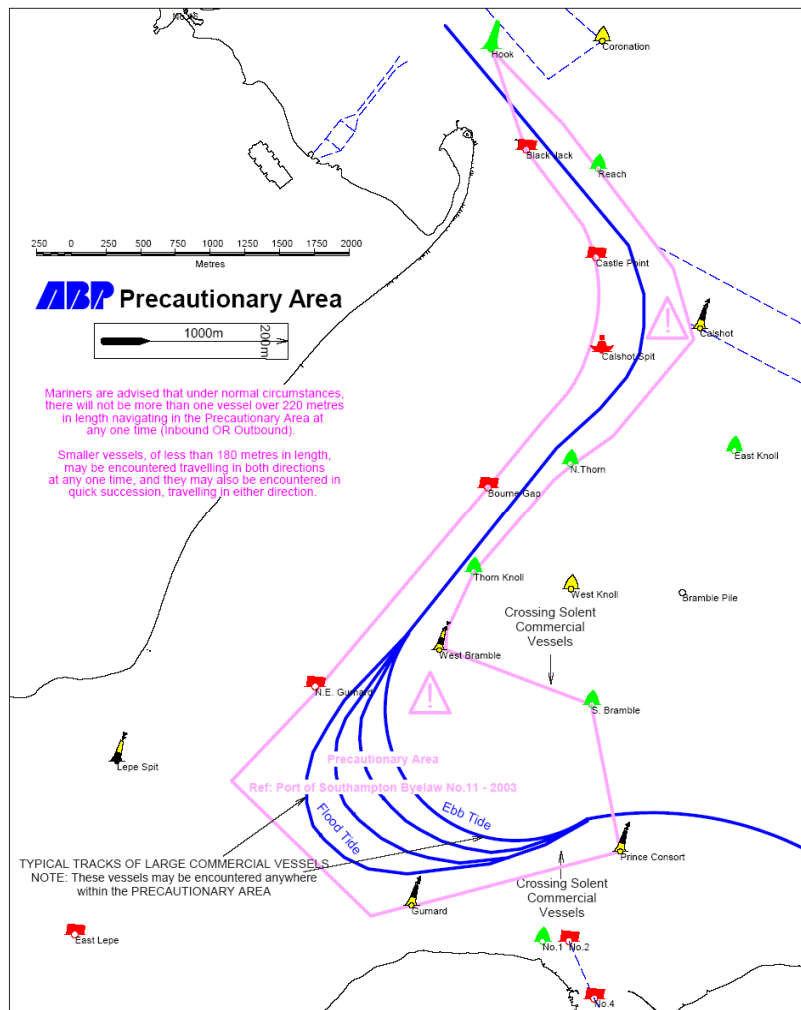
soundness of the hull, spars, rigging, sails and all gear. He must ensure that all safety equipment is properly maintained, stowed and in date and that the crew know where it is kept and how it is to be used. Neither the establishment of these conditions, their use by the race organisers, nor the inspection of the boat under these conditions in any way limits the absolute responsibility of the owner/competitor. The crew are nonetheless advised to satisfy themselves as to the experience of the skipper and the adequacy of all safety equipment and insurance arrangements.

## 20 INSURANCE

Each participating boat shall be insured with valid third-party liability insurance with a minimum cover of £2,000,000 per event or the equivalent.

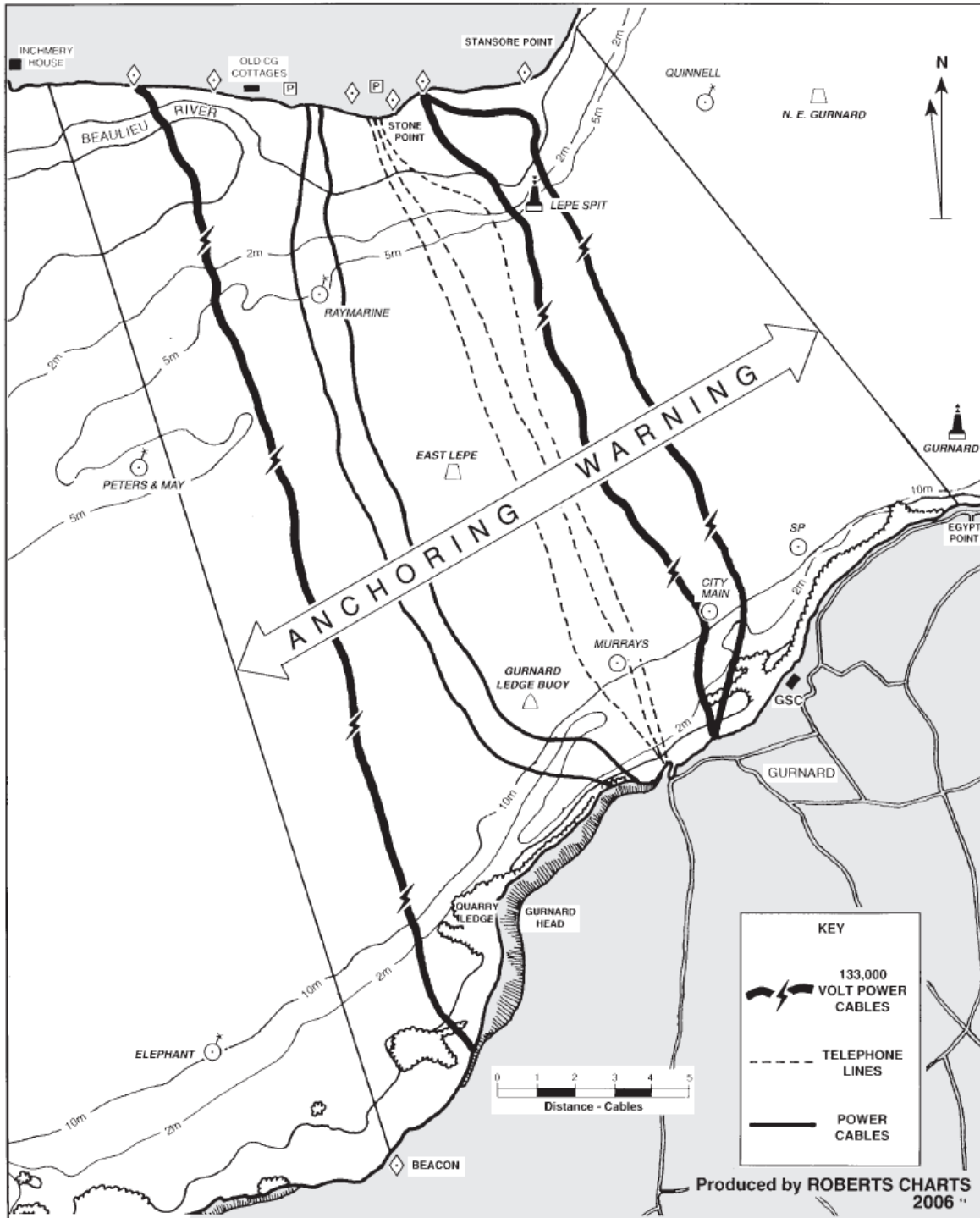
## 21 RYA CHARTER

Competitors should note that Island Sailing Club events implement the RYA Racing Charter and that competitors are required to sail in compliance with the Charter, which can be found at the front of the RYA rule book (Racing Rules of Sailing 2009-2012) or at [www.rya.org.uk/racing/charter](http://www.rya.org.uk/racing/charter)



# HIGH VOLTAGE CABLES AND PIPELINES BETWEEN STONE POINT AND GURNARD

(SEE ADMIRALTY CHART 2040 - THE SOLENT - WESTERN PART)





# Island Sailing Club

## SONAR FLEET

Matched fleet of 9 professionally maintained boats available for charter



- For Racing or Cruising (including match and team racing)
- Race Management team available to help plan and run your event
- Launch Service to moorings north of the Floating Bridge
- Comfortable accommodation in convenient location next to Club
- Showers and Changing Rooms
- Roof terrace, marquee and barbecue area available for Lunches, Suppers and BBQ
- Regatta Dinners or informal dining in the Restaurant

Entire days organised by us

**Email: [racing@islandsc.org.uk](mailto:racing@islandsc.org.uk)**

Tel: 01983 249431 Fax: 01983 293214

Island Sailing Club, 70 High Street, Cowes, Isle of Wight. PO31 7RE