



The Island Sailing Club present

SOCA – UKBA INVITATIONAL REGATTA

Sunday 25th September -
Friday 30th September 2011

Sailing Instructions

RULES

- 1.1 The regatta will be governed by the rules as defined in *The Racing Rules of Sailing*.
- 1.2 Boats starting from Cowes shall keep a good look out for ferries and commercial traffic when starting across the Cowes harbour fairway as marked on BA chart 2793.

Rule 9 parts (b) and (d) of the International Collision Regulations should be complied with at all times as follows:

(b) A sailing vessel shall not impede the passage of a vessel which can safely navigate only within a narrow channel or fairway.

(d) A vessel shall not cross a narrow channel or fairway if such crossing impedes the passage of a vessel which can safely navigate only within such channel or fairway. The latter vessel may use the sound signal prescribed in Rule 34(d) if in doubt as to the intention of the crossing vessel.

Only the race committee may protest a boat under SI 1.2. This changes RRS 60.1.

The ISC RIB may patrol the Harbour Fairway during the starting sequence.

2 NOTICES TO COMPETITORS

Notices to competitors will be posted on the official notice board located at the Lower Marquee of the Island Sailing Club.

3 CHANGES TO SAILING INSTRUCTIONS

Any change to the sailing instructions will be posted before 0900 on the day it will take effect, except that any change to the schedule of races will be posted by 2000 on the day before it will take effect.

4 SIGNALS MADE ASHORE

- 4.1 Signals made ashore will be displayed at The Island Sailing Club main Flagstaff.

5 SCHEDULE OF RACES

- 5.1 Registration and welcome drinks will take place at Port Hamble from 17:00 on Sunday 25th September 2011. Yachts will be allocated by Fairview Sailing from 19:00 on that day.
- 5.2 All racing will be dependent on weather and tide conditions at the time of the regatta. The organising committee and the Island Sailing Club reserve the right to reschedule or cancel races should conditions dictate this to be appropriate.
- 5.3 Racing is scheduled to take place as follows:

DATE	DETAILS	TIME	
Monday 26 th Sept	Practice session		
	Practice race	14:30	
	Skipper's briefing	16:30	
	<i>Social – curry</i>	19:00	
DATE	DETAILS	WARNING SIGNAL	TIME LIMIT
Tuesday 27 th Sept	RACE 1 – Inshore race	10:00	2.5
	RACE 2 – Inshore race		2
	RACE 3 – Inshore race		2
Wednesday 28 th Sept	RACE 4 – Inshore race	09:00	2
	RACE 5 – Coastal race	10:00	6
Thursday 29 th Sept	RACE 6 – Inshore race	10:00	3
	RACE 7 – Inshore race	13:00	2
	<i>Social – Prize-giving dinner</i>	19:30	
Friday 30 th Sept	Non-scoring race – self finishing	10:00	-

6 CLASS

- 6.1 This is a one design, single fleet regatta. All crews will compete in a Beneteau 37s chartered from Fairview Sailing in Port Hamble. A number of yachts have been reserved by the regatta office for a fixed period at an agreed price of £1500, which includes fuel, berthing, and racing insurance. Skippers are to contact Fairview Sailing directly and refer to the SOCA UKBA Regatta when chartering their yacht.
- 6.2 The Class flag will be: International Code Flag 1

7 RACING AREAS

- 7.1 Racing will be conducted in the Solent, extending west to the Needles and Christchurch Bay, and to the east to the Nab Tower and Hayling Bay. Competitors will ensure they carry accurate charts or other suitable navigation equipment for this area.
- 7.2 All yachts shall berth at Cowes Yacht Haven from Monday evening to Friday morning. A group booking has been made and the cost included in the entry fee.

8 COURSES

- 8.1 The course to be sailed will consist of fixed marks which have been allocated code letters, numbers and symbols as listed at the back of these Sailing Instructions, and on the ISC website:
www.islandsc.org.uk/racingdocuments.aspx
- 8.2 RRS 27.1 is changed in that courses for all fleets may be broadcast on VHF radio channel 37A (M). In the event of a discrepancy between the course displayed on the course frame and that given by radio, the course frame will prevail.
- 8.3 Direction of Start**
If starting to Westward a Green Flag will be flown from the Club Flagstaff.
If starting to the Eastward a Red Flag will be flown from the Club Flagstaff.
- 8.4 RRS 27.1 is further changed in that the course to be sailed and the number of rounds will be displayed from the club rooftop course frame at or immediately after the warning signal by exhibiting the symbols for the buoys in the order of rounding.
- 8.5 An Orange or Red letter, number or symbol indicates the buoy shall be rounded to Port.
- 8.6 A Yellow or Green letter, number or symbol indicates the buoy shall be rounded to Starboard.

9 MARKS

- 9.1 Marks used will be fixed navigation buoys or racing marks chosen from the document *Course Marks and Symbols* as shown at the end of these Sailing instructions or downloadable from: www.islandsc.org.uk/racingdocuments.aspx

10 AREAS THAT ARE OBSTRUCTIONS

The following areas are designated as obstructions:

- 10.1 Boats must not anchor or kedge within the area between Stone Point and Gurnard Bay as indicated on the SCRA racing chart Admiralty Chart 2040. Gas and water pipes, telephone cables and electricity cables carrying 133,000 volts lie on the surface of the sea bed.
- 10.2 Boats in whatever direction they are racing shall not pass to the north of:
- 10.2.1 Horse Sand Fort.
- 10.2.2 The obstructions on the row of iron piles off Durns Point, east of Lymington.
- 10.3 The 'Moving Prohibited Zone' referred to in Associated British Ports Byelaw 11 shall rank as an obstruction to boats racing as shown at the end of these Sailing Instructions.

11 THE START

- 11.1 Races will be started by using rule 26 with the warning signal made 5 minutes before the starting signal.

Warning Signal	Class Flag displayed	5 mins before the start	1 Sound signal
Prep Signal	Blue Peter displayed (Int. Code Flag P)	4 mins before the start	1 Sound signal
	Blue Peter removed (Int. Code Flag P)	1 min before the start	1 Sound signal
Start	Class Flag removed	Start	1 Sound signal

- 11.2 The starting line is the extension of a line through the two club flag staffs, each bearing an orange panel with a black cross.
- 11.3 The Outer Distance Mark (ODM) is a **BLACK** inflatable buoy. If it is not laid the ODM will be the **yellow** cylindrical Trinity House Mooring Buoy.
- 11.4 The Inner Distance Mark (IDM) if laid, is a **BLACK** inflatable buoy, at the southern end of the line. When starting, boats shall pass between the IDM and ODM.
- 11.5 When either the ODM or the IDM is on the pre-start side of the line, boats shall start between the points of the line nearest to the ODM and IDM.

12 THE FINISH

- 12.1 The Finish Line, which is not the same as the start line, is defined as the line between the Island Sailing Club Rear Flagstaff and the yellow cylindrical Trinity House Mooring Buoy.

13 PENALTY SYSTEM

- 13.1 The Scoring Penalty, rule 44.1, will apply.

14 TIME LIMIT

- 14.1 The Time limit for the first boat to finish is shown in the table in section 5.3.
- 14.2 Boats failing to finish within 30 minutes after the first boat sails the course and finishes will be scored Did Not Finish without a hearing. This changes rules 35, A4 and A5.

15 PROTESTS AND REQUESTS FOR REDRESS

- 15.1 Protest forms are available at the race office, located at Island Sailing Club. Protests and requests for redress or reopening shall be delivered there within the appropriate time limit.
- 15.2 For each class, the Protest Time Limit is 90 minutes after the last boat has finished the last race of the day.
- 15.3 Protest Hearings will be held in the Centenary Room, located at Island Sailing Club.

16 SCORING

- 16.1 The Low Point Scoring system will be used.
- 16.2 3 races are required to be completed to constitute a series.
- 16.3 If six or seven races are completed, each boat's score shall be the total of all its scores in races less its worst score.
- 16.4 RRS 44.1 shall apply (720 degree turns).

17 SAFETY

- 17.1 A boat that retires from a race shall notify the race committee as soon as possible.

18 RADIO COMMUNICATION

- 18.1 Except in an emergency, a boat shall neither make radio transmissions while racing nor receive radio communications not available to all boats. This restriction also applies to mobile telephones.
- 18.2 The Race Committee will broadcast to the fleet on VHF channel 37A (M)

19 PRIZES

Prizes will be presented at the prize giving ceremony which will be at the Island SC at 1930hrs on Thursday 29th September

20 DISCLAIMER OF LIABILITY

- 20.1 Competitors participate in the regatta entirely at their own risk. See rule 4, Decision to Race.
- 20.2 The organising committee, the organising agencies and their Boards, the Island Sailing Club and Fairview Sailing Ltd are providing this series only on the understanding that the committee, the agencies, the Club, and Fairview

Sailing Ltd and their representatives bear no responsibility for any loss, damage, injury or inconvenience to yachts, equipment or persons howsoever arising directly or indirectly from the rules, policies, courses or ruling during the Regatta and its related activities. The skippers of participating yachts must ensure that their crew are made aware of these conditions.

21 INSURANCE

Each participating boat shall be insured with valid third-party liability insurance with a minimum cover of £2 Million per event or the equivalent.

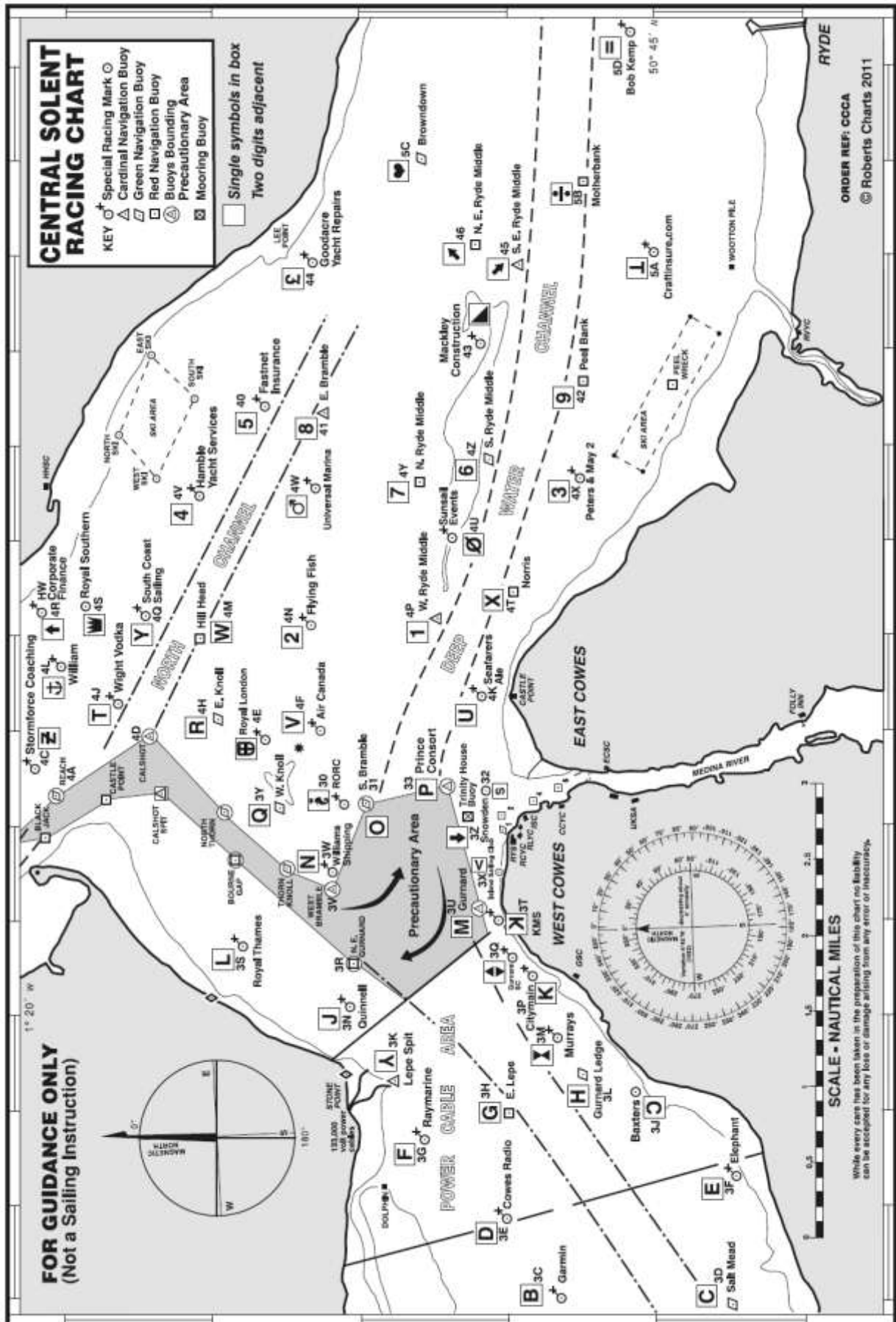
ADDITIONAL

The Committee and Members of the Island Sailing Club hope that skippers, crews and families of competing yachts will consider themselves temporary members of the ISC for the duration of the event and make use of the Club's facilities.

Competitors should note that the ISC implements the RYA Racing Charter and competitors will be required to undertake to sail in compliance with the Charter, which can be found at the front of the RYA Racing Rules of Sailing book or at www.rya.org.uk/racing/charter

ATTACHMENT A

Racing areas (3 pages)



WEST SOLENT RACING CHART

NOT FOR NAVIGATION

- KEY
- Yellow or Orange Mark
 - △ Cardinal Navigation Buoy
 - ▭ Green Navigation Buoy
 - ◻ Red Navigation Buoy

Single symbols in box
Two digits adjacent

NEEDS ORE POINT

B
3C +
GARMIN

A 3A
W. LEPE

C
3D +
SALT MEAD

E 3B
eDigitalResearch
(ex Newtown)

2R
AQUASPEC

2J +
FOLKBOATS UK

2K
QUOD POSSUMUS!

rib-ll.com (G)

2F +
BERTHON (F)

PAUL JACKSON (H)

SOLENT BANK
2X

26
HAMPSTEAD LEDGE

MOORE & BLATCH (E)

OL
JACK IN THE BASKET

LYMINGTON BANK
2T

22
GEORGE HOTEL

24
BW Moorings

KINGSTON & GREST

25
WADWORTH

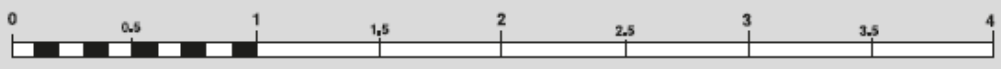
NEWTOWN

ISLE OF WIGHT

BLACK ROCK
21

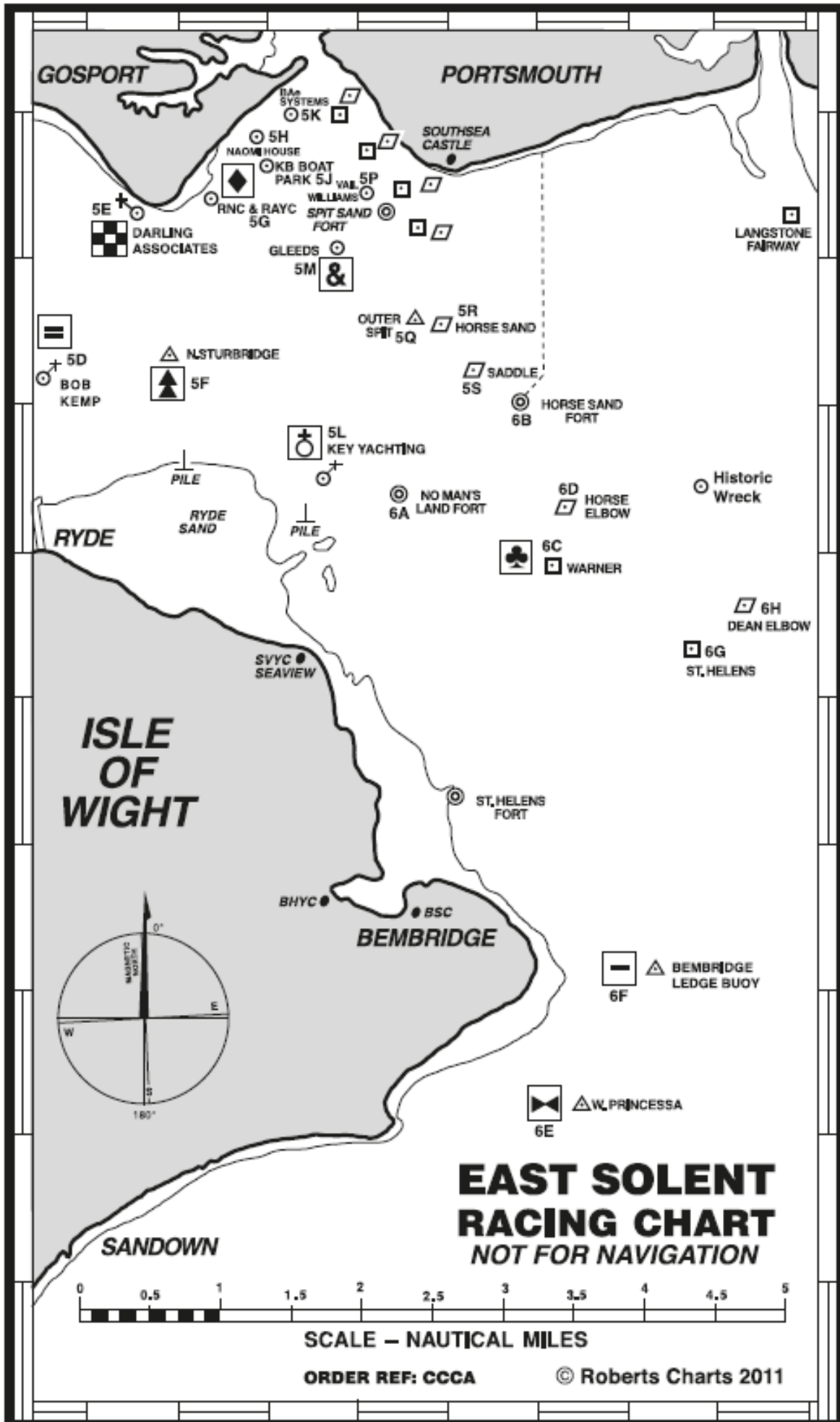
OL
RSYC

RSYC
YSC
YARMOUTH



SCALE – NAUTICAL MILES

© Roberts Charts 2011



GOSPORT

PORTSMOUTH

SOUTHSEA CASTLE

RYDE

ISLE OF WIGHT

BEMBRIDGE

SANDOWN

5E DARLING ASSOCIATES
 5D BOB KEMP
 5F N. STURBRIDGE
 5G RNC & RAYC
 5H NAOMI HOUSE
 5I KB BOAT PARK
 5J VAL. WILLIAMS
 5K BAG SYSTEMS
 5L KEY YACHTING
 5M GLEEDS
 5N SPIT SAND FORT
 5O OUTER SPIT
 5P SADDLE
 5Q HORSE SAND
 5R HORSE SAND
 5S HORSE SAND FORT

6A NO MAN'S LAND FORT
 6B HORSE SAND FORT
 6C WARNER
 6D HORSE ELBOW
 6E W. PRINCESSA
 6F BEMBRIDGE LEDGE BUOY
 6G ST. HELENS
 6H DEAN ELBOW
 6I HISTORIC WRECK

RYDE SAND
 PILE
 SVYC SEAVIEW
 BHYC
 BSC
 ST. HELENS FORT
 LANGSTONE FAIRWAY



ATTACHMENT B

COURSE MARKS AND SYMBOLS

T	BW Moorings	N	Williams Shipping	▼	Aquaspec	▼	Laid Leeward Mark
U	Wadworth	O	S. Bramble	£	Goodacre Yacht Repairs	◀	Laid Gybe or Wing Mark
●	George Hotel	P	Prince Consort	↕	Gurnard SC	+	Outer Distance Mark (Laid inflatable)
%	Berthon	Q	W. Knoll	⌘	Murrays	⦿	Repeat
★	Folkboats UK	R	E. Knoll	↘	S. E. Ryde Middle	↕	Two Times
€	Solent Bank	S	Snowden	↗	N. E. Ryde Middle	⬢	Three Times
\$	Hampstead Ledge	T	Wight Vodka	♥	Brown-down	#	Start/Finish Line
⊗	Quod Possumus!	L	Craftinsure.com	÷	Motherbank	⦿	Leeward Gate
A	W. Lepe	U	Seafarers Ale	=	Bob Kemp	↕	Windward Spreader Mark
B	Garmin	V	Air Canada	↑	HW Corporate Finance	⤴	Leeward Spreader Mark
C	Salt Mead	W	Hill Head	?	RORC		
⊂	Baxters	X	Norris	⊕	Royal London		
D	Cowes Radio	Y	South Coast Sailing	⚡	Royal Southern		
E	Elephant	A	Lepe Spit	⚓	William		
E	eDigitalResearch	Z	Stormforce Coaching	♀	Coronation		
F	Raymarine	1	W. Ryde Middle	♂	Key Yachting		
G	E. Lepe	2	Flying Fish	⊕	Darling Associates		
H	Gurnard Ledge	3	Peters & May 2	♂	Universal Marina		
J	Quinnell	4	Hamble Yacht Services	∅	Sunsail Events		
Γ	Paul Jackson	5	Fastnet Insurance	◆	RNC & RAYC		
K	Citymain	6	S. Ryde Middle	&	Gleeds		
K	Kingston Marine Services (KMS)	7	N. Ryde Middle	⬆	North Sturbridge		
L	Royal Thames	8	E. Bramble	↓	Trinity House Buoy		
T	Lymington Bank	9	Peel Bank	◀	Island Sailing Club (Mark Off Green)		
M	Gurnard	▲	Mackley Construction	▲	Laid Windward Mark		

MARKS OUTSIDE SOLENT

▲	North Head Buoy	50°42'N 01°35'W
≡	LB Barnes Ingram	50°41'N 01°41'W
⬆	Christchurch Ledge Buoy	50°41'N 01°41'W
⊕	Poole Bar Buoy (No1)	50°39'N 01°52'W
Σ	S. W. Shingles Buoy	50°39'N 01°37'W
⬆	Needles Fairway Buoy	50°38'N 01°56'W
♣	Wamer Buoy	50°43'N 01°09'W
—	Bembridge Ledge Buoy	50°41'N 01°29'W
▼	Winner Buoy	50°46'N 01°00'W
↕	New Grounds Buoy	50°46'N 05°55'W
⬆	W. Princessa Buoy	50°40'N 01°08'W
⊕	Nab East Buoy	50°42'N 01°07'W
□	Nab Tower	50°40'N 05°7'W

MOST MARK POSITIONS ARE LISTED IN THE TWO DIGIT LIST

