

QUARTER TON TRAINING WEEKEND

5th and 6th June 2010

Sailing Instructions

The organising authority is the Island Sailing Club

1. RULES

- 1.1 The regatta will be governed by the *rules* as defined in *The Racing Rules of Sailing 2009 – 2012*. The national prescriptions of the RYA will apply together with:
- 1.2 IRC Rules Parts A, B and C
- 1.3 This Notice of Race (NOR)
- 1.4 The Sailing Instructions (SI)
 - 1.4.1. In the event of a conflict between the Sailing Instructions and the Notice of Race, the Sailing Instructions will prevail (this changes RRS 63.7).

2. CHANGES TO THE RACING RULES

On the water coaching will be made available to competitors on Saturday 5th June. Advice given will not be classed as Outside Help (this changes RRS 41)

3. NOTICES TO COMPETITORS

- 3.1 Notices to competitors will be posted on the Official Notice Board in the Island Sailing Club Marquee.
- 3.2 The location of the Committee boat will be indicated, not less than 1 hour before the scheduled time of the first warning signal, from the Shore Foredeck of the Island Sailing Club, by displaying a letter number or symbol of a navigation or racing mark near to the committee boat. This location may also be broadcast on VHF channel 72 at frequent intervals.

4. CHANGES TO SAILING INSTRUCTIONS

Any changes to the schedule of races will be posted by 2100 on the day before it will take effect. Changes in the sailing instructions will be indicated by displaying code flag "L" and additionally may be broadcast orally by VHF Channel 72 on the water before the warning signal, in accordance with RRS 90.2 (c).

5. SIGNALS MADE ASHORE

- 5.1 Signals made ashore will be displayed on the Island Sailing Club flagstaff.
- 5.2 When flag AP is displayed ashore '1 minute' is replaced with 'not less than one hour' in the race signal AP.

6. SCHEDULE OF RACES

Up to 6 races are scheduled as follows, (both classes starting together)

Saturday 5 th June		
Quarter Ton Class	Up to 4 races preceded by a practice start	First Warning Signal 0955
Mini Ton Class	Up to 4 races preceded by a practice start	First Warning Signal 0955
Sunday 6 th June		
Quarter Ton Class	Up to 2 races	First Warning Signal 0955
Mini Ton Class	Up to 2 races	First Warning Signal 0955

No race will be started on the Sunday after 1400.

7. CLASS FLAG

The warning signal class flag for both classes will be International Code Flag Pennant Number 1

8. COURSES

8.1 Races will be run in the Central Solent.

8.2 It is intended that races on the Saturday will be committee boat starts and windward/leeward courses. Please see Appendix A for Windward Leeward Courses.

8.3 Racing on the Sunday may be "round the cans" in which case the course will be given using fixed navigation and Solent race marks chosen from the Central Solent Racing Chart (Appendix B), and will be broadcast on VHF channel 72 before or after the warning signal, using the two numerical digits from the mark list (Appendix C)

9. MARKS

Laid racing marks will be black inflatable marks with ISC and ISC burgee on them.

10. AREAS THAT ARE OBSTRUCTIONS

Boats shall comply with Associated British Ports Southampton Bye-Law 11 – The Moving Prohibited Zone in the Precautionary Area which shall rank as an obstruction for the purposes of RRS 19 and 20.

11. THE START

11.1 Races will be started by using rule 26 with the warning signal made 5 minutes before the starting signal.

11.2 The starting line will be between a staff displaying an orange flag on the committee boat and a specially laid orange inflatable Outer Distance Mark (ODM)

11.3 A boat starting later than 10 minutes after her start shall be scored DNS without a hearing. This changes rules A4 and A5.

12. CHANGE OF COURSE AFTER THE START

Adding to RRS 33, the Race Committee may display or radio the course to be sailed for the remainder of the race. Changing Race Signals flag C and RRS 33, the position of a laid inflatable mark(s) may be adjusted by up to approximately plus or minus 10 degrees relative to the previous laid mark(s) and up to approximately 500 metres to windward or leeward without the signalling of flag C.

13. THE FINISH

The finishing line will be between a staff displaying an orange flag on the finish boat and the ODM of the start/finish line or the last mark of the course or, if shortened, the nearby mark.

14. TIME LIMITS

Boats failing to finish within 30 minutes after the first boat in their class sails the course and finishes will be scored Did Not Finish, without a hearing. This changes rules 35, A4 and A5.

15. PENALTY SYSTEM

RRS 44.1 is changed so that the Two-Turns Penalty is replaced by the One-Turn Penalty.

16. PROTESTS AND REQUESTS FOR REDRESS

Protests shall be lodged at the Race Office at the ISC not later than one hour after the protesting boat has finished racing for the day. The time and place of any hearing will be displayed on the official notice board. It is the responsibility of both the protestor and protestee to establish the time and place of the hearing. Protest hearings will take place on the day of the race.

17. SCORING

The Low Point Scoring System of RRS Appendix A will apply, amended in that all races will count towards a boat's score. This changes A2.

18. RADIO COMMUNICATION

The Race Committee may communicate race information to competitors on VHF Channel 72.

19. PRIZES

Prizes will be presented at the Island Sailing Club on the evening of Saturday 5th June, following the Debriefing.

20. DEBRIEF AND BBQ

Competitors are encouraged to return to the Island Sailing Club for the debrief which will begin at approximately 1730. This will be followed by the BBQ at approximately 1930.

21. DISCLAIMER OF LIABILITY

Competitors participate in the regatta entirely at their own risk. See rule 4, Decision to Race. The organising authority will not accept any liability for material damage or personal injury or death, sustained in conjunction with or prior to, during, or after the regatta.

22. INSURANCE

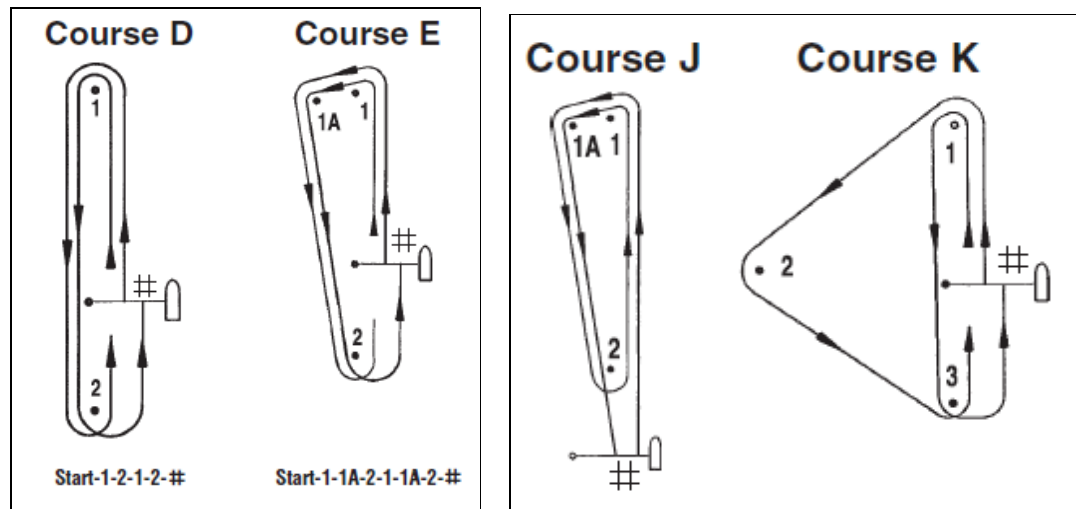
Each participating boat shall be insured with valid third-party liability insurance with a minimum cover of £2,000,000 sterling whilst racing.

23. RYA CHARTER

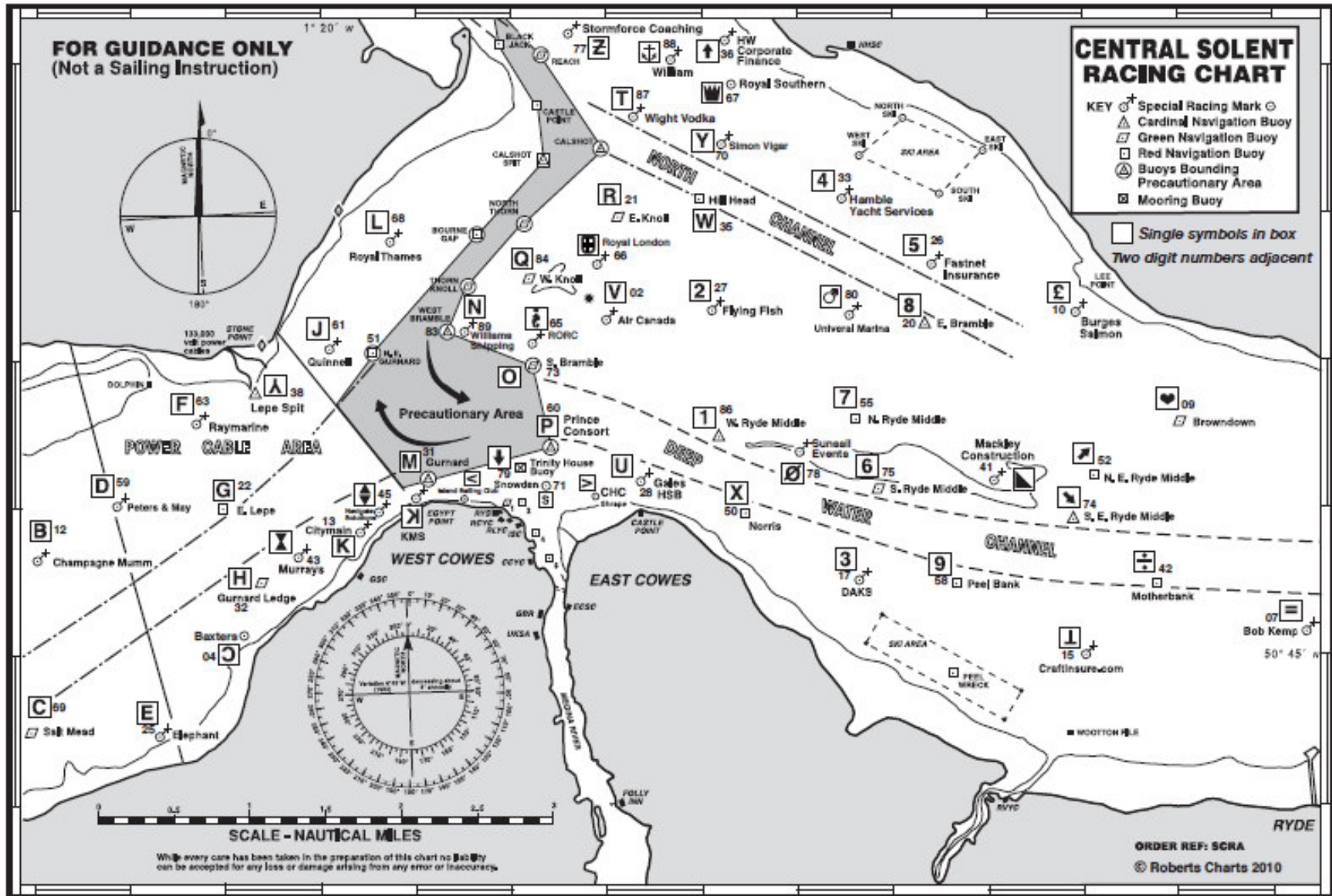
Competitors should note that Island Sailing Club events implement the RYA Racing Charter and that competitors will be required to sail in compliance with the Charter, which can be found at the front of the RYA rule book (Racing Rules of Sailing 2009-2012) or at www.rya.org.uk/racing/charter

APPENDIX A

After the start boats are not required to pass through the Start / Finish line unless # is displayed with the single code letter in which case boats shall pass between the committee boat and the ODM of the finish line after leaving the leeward mark.



APPENDIX B



Also available for download from www.islandsc.org.uk/racingdocuments.aspx

APPENDIX C

SCRA Two Digit Solent Course Marks 2010

ID	Mark	Colour	Lat N	Long W	ID	Mark	Colour	Lat N	Long W
01	Laid Windward Mark				51	North East Gurnard	R	50 47.08	01 19.42
02	Air Canada	Y	50 47.20	01 17.00	52	North East Ryde Middle	R	50 46.21	01 11.88
03	Aquaspec	O	50 45.43	01 25.89	53	North East Shingles	BYB	50 41.96	01 33.41
04	Baxters	O	50 45.23	01 20.69	54	North Head	G	50 42.69	01 35.52
05	Bembridge Ledge Buoy	BYB	50 41.15	01 02.81	55	North Ryde Middle	R	50 46.61	01 14.31
06	Berthon	Y	50 44.20	01 29.22	56	North Sturbridge	BY	50 45.33	01 08.23
07	Bob Kemp	Y	50 45.18	01 09.65	57	Paul Jackson	Y	50 44.33	01 28.19
08	Bridge	YBY	50 39.63	01 36.88	58	Peel Bank	R	50 45.49	01 13.34
09	Browdown	G	50 46.57	01 10.95	59	Peters & May	Y	50 46.13	01 22.19
10	Burges Salmon	Y	50 47.31	01 12.10	60	Prince Consort	BY	50 46.42	01 17.59
11	BWM	Y	50 42.86	01 28.55	61	Quinnell	Y	50 47.07	01 19.88
12	Champagne Mumm	Y	50 45.64	01 23.12	62	Quod Possumus!	Y	50 44. 83	01 26.09
13	Citymain	O	50 45.78	01 19.76	63	Raymarine	Y	50 46.58	01 21.46
14	Coronation	Y	50 49.55	01 17.62	64	RNC & RAYC	Y	50 46.42	01 07.90
15	Craftinsure.com	Y	50 45.03	01 11.89	65	RORC	Y	50 47.12	01 17.72
16	Cutter	Y	50 49.45	01 16.91	66	Royal London	Y	50 47.67	01 17.00
17	DAKS	Y	50 45.53	01 14.39	67	Royal Southern	O	50 48.88	01 15.57
18	Darling Associates	Y	50 46.26	01 08.78	68	Royal Thames	Y	50 47.81	01 19.25
19	Dunford	Y	50 43.37	01 31.53	69	Salt Mead	G	50 44.52	01 23.04
20	East Bramble	BYB	50 47.23	01 13.64	70	Simon Vigar	Y	50 48.46	01 15.72
21	East Knoll	G	50 47.98	01 16.83	71	Snowden	O	50 46.25	01 17.59
22	East Lepe	R	50 45.93	01 21.07	72	Solent Bank	R	50 44.23	01 27.37
23	Echopilot	Y	50 42.81	01 32.53	73	South Bramble	G	50 46.98	01 17.72
24	eDigitalResearch	O	50 44.18	01 23.79	74	South East Ryde Middle	YB	50 45.93	01 12.09
25	Elephant	Y	50 44.63	01 21.88	75	South Ryde Middle	G	50 46.13	01 14.16
26	Fastnet Insurance	Y	50 47.66	01 13.65	76	South West Shingles	R	50 39.35	01 37.39
27	Flying Fish	O	50 47.27	01 15.90	77	Stormforce Coaching	Y	50 49.21	01 17.46
28	Gales HSB	Y	50 46.15	01 16.65	78	Sunsail Events	Y	50 46.43	01 15.09
29	George Hotel	Y	50 42.87	01 29.40	79	Trinity House Buoy	Y	50 46.31	01 17.75
30	Gleeds	Y	50 46.16	01 06.39	80	Universal Marina	Y	50 47.33	01 14.59
31	Gurnard	BY	50 46.22	01 18.84	81	Wadworth	Y	50 43.15	01 27.49
32	Gurnard Ledge	G	50 45.51	01 20.59	82	Warner	R	50 43.87	01 03.99
33	Hamble Yacht Services	O	50 48.13	01 14.64	83	West Bramble	YBY	50 47.20	01 18.65
34	Hamstead Ledge	G	50 43.87	01 26.18	84	West Knoll	Y	50 47.43	01 17.84
35	Hill Head	R	50 48.07	01 16.00	85	West Lepe	R	50 45.24	01 24.09
36	HW Corporate Finance	Y	50 49.18	01 15.71	86	West Ryde Middle	YBY	50 46.48	01 15.79
37	Key Yachting	Y	50 44.35	01 08.50	87	Wight Vodka	Y	50 48.63	01 16.65
38	Lepe Spit	YB	50 46.78	01 20.64	88	William	O	50 49.03	01 16.49
39	Lymington Bank	R	50 43.10	01 30.85	89	Williams Shipping	O	50 47.20	01 18.50
40	Lynx Sports	Y	50 45.11	01 27.34	90	Winner	YB	50 45.10	01 00.10
41	Mackley Construction	Y	50 46.16	01 13.09	91				
42	Mother Bank	R	50 45.49	01 11.21	92				
43	Murrays	Y	50 45.62	01 20.14	93				
44	Nab Tower	B	50 40.08	00 57.15	94				
45	Navigate Solutions	Y	50 45.97	01 19.45	95				
46	Needles Fairway	RW	50 38.24	01 38.98	96				
47	Needles Lighthouse	RW	50 39.73	01 35.52	97				
48	New Grounds	BYB	50 41.84	00 58.49	98				
49	No Mans Land Fort	B	50 44.40	01 05.70	99				
50	Norris	R	50 45.97	01 15.51					

Colour notation: Y Yellow
R Red
G Green

B Black
W White
O Orange

This is a selected list of commonly used marks. There are other marks in the Solent.
Positions listed are approximate. Marks 91 onwards are available for local use.