



MINI TON CUP 1 DAY REGATTA

21ST August 2010

Sailing Instructions

The organising authority is the Island Sailing Club

1. RULES

- 1.1 The regatta will be governed by the *rules* as defined in *The Racing Rules of Sailing 2009 – 2012*.
The national prescriptions of the RYA will apply together with:
- 1.2 IRC Rules Parts A, B and C
- 1.3 This Notice of Race (NOR)
- 1.4 The Sailing Instructions (SI)
 - 1.4.1. In the event of a conflict between the Sailing Instructions and the Notice of Race, the Sailing Instructions will prevail (this changes RRS 63.7).

2. NOTICES TO COMPETITORS

- 2.1 Notices to competitors will be posted on the Official Notice Board in the Island Sailing Club Marquee.
- 2.2 The location of the Committee boat will be indicated, not less than 1 hour before the scheduled time of the first warning signal, from the **Shore Foredeck of the Island Sailing Club**, by displaying a letter number or symbol of a navigation or racing mark near to the committee boat. This location may also be broadcast on VHF channel 72 at frequent intervals.

3. CHANGES TO SAILING INSTUCTIONS

Any changes to the schedule of races will be posted by 2100 on the day before it will take effect. Changes in the sailing instructions will be indicated by displaying Code Flag Numeral Pennant 1 over code flag "L" on the ISC roof top flagpole and additionally may be broadcast orally by VHF Channel 72 on the water before the warning signal, in accordance with RRS 90.2 (c).

4. SIGNALS MADE ASHORE

- 4.1 Signals made ashore will be displayed on the Island Sailing Club flagstaff below the class flag Code Flag Numeral Pennant 1.
- 4.2 When flag AP is displayed ashore '1 minute' is replaced with 'not less than one hour' in the race signal AP.

5. SCHEDULE OF RACES

Between 3 and 5 races are scheduled as follows, (both classes starting together)

Saturday 21 ST August		
IRC Class	Up to 5 races	First Warning Signal 1025
ISCRS Class		
Subsequent races will follow as soon as possible after the previous race has been completed		

6. CLASS FLAG

The warning signal class flag for both classes will be International Code Flag Pennant Number 1

7. COURSES

- 7.1 Races will be run in the Central Solent.
- 7.2 Races will be from a committee boat
- 7.3 The first 2 races will be round the cans the following races will be windward/leeward courses.

Please see Appendix A for Windward Leeward Courses, and Appendix B for the round the cans courses.

8. MARKS

Laid racing marks will be black inflatable marks with a white panel displaying the ISC burgee on the sides. Fixed navigation and Solent race marks will be chosen from the Central Solent Racing Chart and will only be broadcast on VHF channel 72 before or after the warning signal, using the two numerical digits from the mark list (Appendix C)

9. AREAS THAT ARE OBSTRUCTIONS

Boats shall comply with Associated British Ports Southampton Bye-Law 11 – The Moving Prohibited Zone in the Precautionary Area which shall rank as an obstruction for the purposes of RRS 19 and 20.

10. THE START

- 10.1 Races will be started by using rule 26 with the warning signal made 5 minutes before the starting signal.
- 10.2 The starting line will be between a staff displaying an orange flag on the committee boat and a specially laid orange inflatable Outer Distance Mark (ODM)
- 10.3 A boat starting later than 10 minutes after her start shall be scored DNS without a hearing. This changes rules A4 and A5.

11. CHANGE OF COURSE AFTER THE START

Adding to RRS 33, the Race Committee may display or radio the course to be sailed for the remainder of the race. Changing Race Signals flag C and RRS 33, the position of a laid inflatable mark(s) may be adjusted by up to approximately plus or minus 10 degrees relative to the previous laid mark(s) and up to approximately 500 metres to windward or leeward without the signalling of flag C.

12. THE FINISH

The finishing line will be between a staff displaying an orange flag on the finish boat and the ODM of the start/finish line or the last mark of the course or, if shortened, the nearby mark.

13. TIME LIMITS

Boats failing to finish within 30 minutes after the first boat in their class sails the course and finishes will be scored Did Not Finish, without a hearing (one point more than the number of boats entered in the series). This changes rules 35, A4 and A5.

14. PENALTY SYSTEM

RRS 44.1 is changed so that the Two-Turns Penalty is replaced by the One-Turn Penalty.

15. PROTESTS AND REQUESTS FOR REDRESS

Protests shall be lodged at the Race Office at the ISC not later than one hour after the last boat finishes the last race of the day. The time and place for protests will be posted on the official notice board not later than 30 minutes after the expiry of protest time. It is the responsibility of both the protestor and protestee to establish the time and place of the hearing. Protest hearings will take place on the day of the race.

16. SCORING

The Low Point Scoring System of RRS Appendix A will apply, amended in that if 3 races are completed all races will count towards a boat's score, if 4 or more are completed then 1 discard will apply. This changes A2.

17. RADIO COMMUNICATION

The Race Committee may communicate race information to competitors on VHF Channel 72.

18. PRIZES

Prizes will be presented at the Island Sailing Club at 1900hrs on Saturday 21st August during the evening BBQ

19. DISCLAIMER OF LIABILITY

Competitors participate in the regatta entirely at their own risk. See rule 4, Decision to Race. The organising authority will not accept any liability for material damage or personal injury or death, sustained in conjunction with or prior to, during, or after the regatta.

20. INSURANCE

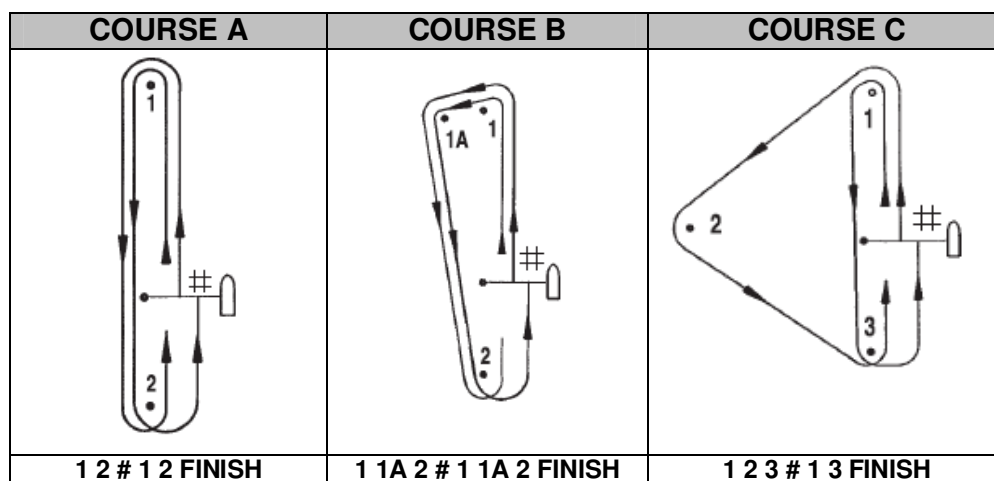
Each participating boat shall be insured with valid third-party liability insurance with a minimum cover of £2,000,000 sterling whilst racing.

21. RYA CHARTER

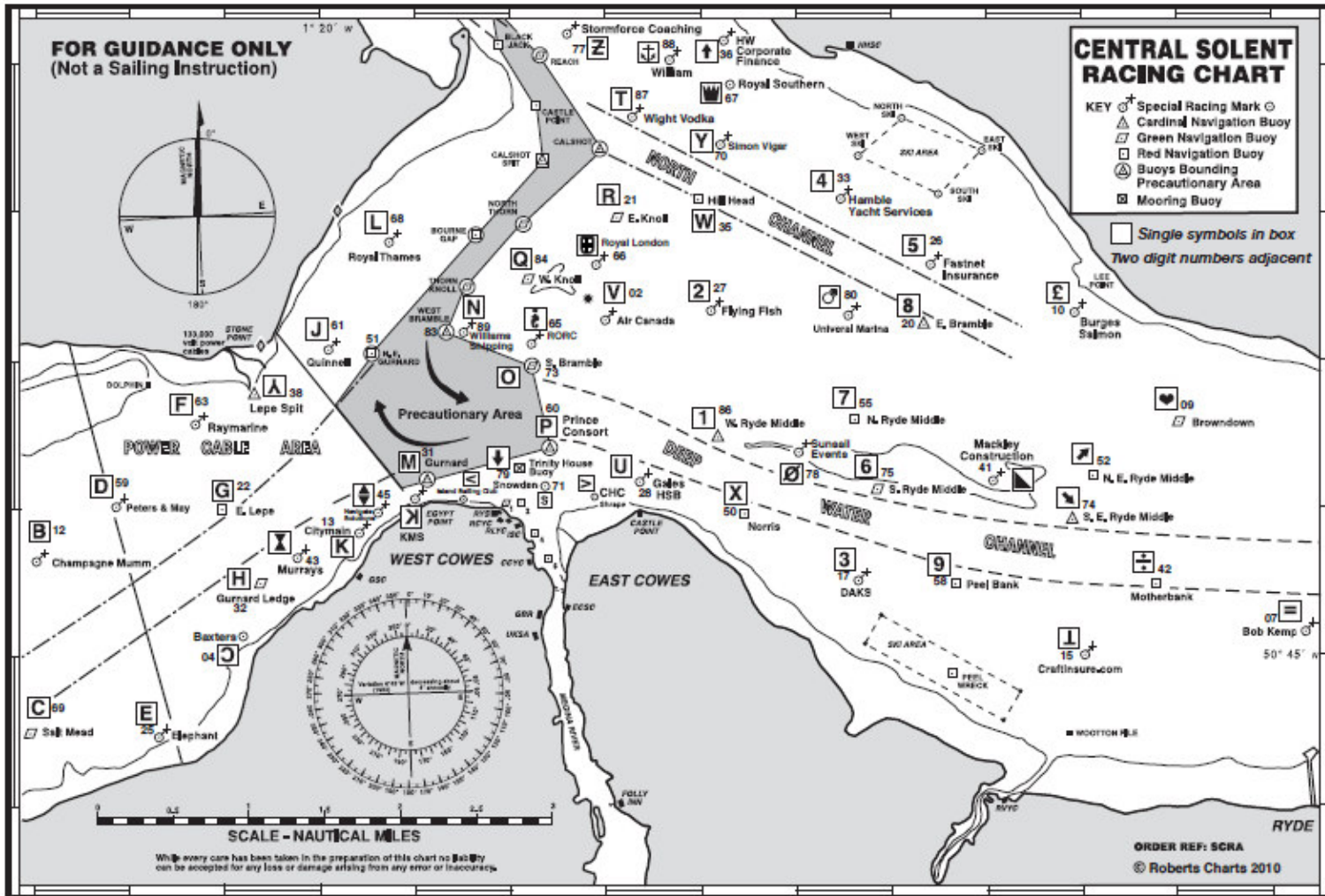
Competitors should note that Island Sailing Club events implement the RYA Racing Charter and that competitors will be required to sail in compliance with the Charter, which can be found at the front of the RYA rule book (Racing Rules of Sailing 2009-2012) or at www.rya.org.uk/racing/charter

APPENDIX A

After the start boats are required to leave the ODM of the start finish line to port when sailing from the leeward mark to the windward mark.



APPENDIX B



SCRA Two Digit Solent Course Marks

2010

ID	Mark	Colour	Lat N	Long W	ID	Mark	Colour	Lat N	Long W
01	Laid Windward Mark				51	North East Gurnard	R	50 47.06	01 19.42
02	Air Canada	Y	50 47.20	01 17.00	52	North East Ryde Middle	R	50 46.21	01 11.88
03	Aquaspec	O	50 45.43	01 25.89	53	North East Shingles	BYB	50 41.96	01 33.41
04	Baxters	O	50 45.23	01 20.69	54	North Head	G	50 42.69	01 35.52
05	Bembridge Ledge Buoy	BYB	50 41.15	01 02.81	55	North Ryde Middle	R	50 46.61	01 14.31
06	Berthon	Y	50 44.20	01 29.22	56	North Sturbridge	BY	50 45.33	01 08.23
07	Bob Kemp	Y	50 45.18	01 09.65	57	Paul Jackson	Y	50 44.33	01 28.19
08	Bridge	YBY	50 39.63	01 36.88	58	Peel Bank	R	50 45.49	01 13.34
09	Browndown	G	50 46.57	01 10.95	59	Peters & May	Y	50 46.13	01 22.19
10	Burges Salmon	Y	50 47.31	01 12.10	60	Prince Consort	BY	50 46.42	01 17.59
11	BWM	Y	50 42.98	01 28.55	61	Quinnell	Y	50 47.07	01 19.88
12	Champagne Mumm	Y	50 45.64	01 23.12	62	Quod Possumus!	Y	50 44. 83	01 26.09
13	Citymain	O	50 45.78	01 19.78	63	Raymarine	Y	50 46.58	01 21.46
14	Coronation	Y	50 49.55	01 17.62	64	RNC & RAYC	Y	50 46.42	01 07.90
15	Craftinsure.com	Y	50 45.03	01 11.89	65	RORC	Y	50 47.12	01 17.72
16	Cutter	Y	50 49.45	01 16.91	66	Royal London	Y	50 47.87	01 17.00
17	DAKS	Y	50 45.53	01 14.39	67	Royal Southern	O	50 48.88	01 15.57
18	Darling Associates	Y	50 46.26	01 08.76	68	Royal Thames	Y	50 47.81	01 19.25
19	Dunford	Y	50 43.37	01 31.53	69	Salt Mead	G	50 44.52	01 23.04
20	East Bramble	BYB	50 47.23	01 13.64	70	Simon Vigar	Y	50 48.46	01 15.72
21	East Knoll	G	50 47.96	01 18.83	71	Snowden	O	50 46.25	01 17.59
22	East Lepe	R	50 45.93	01 21.07	72	Solent Bank	R	50 44.23	01 27.37
23	Echopilot	Y	50 42.81	01 32.53	73	South Bramble	G	50 46.98	01 17.72
24	eDigitalResearch	O	50 44.18	01 23.79	74	South East Ryde Middle	YB	50 45.93	01 12.09
25	Elephant	Y	50 44.63	01 21.88	75	South Ryde Middle	G	50 46.13	01 14.16
26	Fastnet Insurance	Y	50 47.66	01 13.65	76	South West Shingles	R	50 39.35	01 37.39
27	Flying Fish	O	50 47.27	01 15.90	77	Stormforce Coaching	Y	50 49.21	01 17.46
28	Gales HSB	Y	50 46.15	01 16.65	78	Sunsail Events	Y	50 46.43	01 15.09
29	George Hotel	Y	50 42.87	01 29.40	79	Trinity House Buoy	Y	50 46.31	01 17.75
30	Gleeds	Y	50 46.16	01 08.39	80	Universal Marina	Y	50 47.33	01 14.59
31	Gurnard	BY	50 46.22	01 18.84	81	Wadworth	Y	50 43.15	01 27.49
32	Gurnard Ledge	G	50 45.51	01 20.59	82	Warner	R	50 43.87	01 03.99
33	Hamble Yacht Services	O	50 48.13	01 14.64	83	West Bramble	YBY	50 47.20	01 18.65
34	Hamstead Ledge	G	50 43.87	01 26.18	84	West Knoll	Y	50 47.43	01 17.84
35	Hill Head	R	50 48.07	01 16.00	85	West Lepe	R	50 45.24	01 24.09
36	HW Corporate Finance	Y	50 49.18	01 15.71	86	West Ryde Middle	YBY	50 46.48	01 15.79
37	Key Yachting	Y	50 44.35	01 06.50	87	Wight Vodka	Y	50 48.63	01 16.65
38	Lepe Spit	YB	50 46.78	01 20.64	88	William	O	50 49.03	01 16.49
39	Lymington Bank	R	50 43.10	01 30.85	89	Williams Shipping	O	50 47.20	01 18.50
40	Lynx Sports	Y	50 45.11	01 27.34	90	Winner	YB	50 45.10	01 00.10
41	Mackley Construction	Y	50 46.16	01 13.09	91				
42	Mother Bank	R	50 45.49	01 11.21	92				
43	Murrays	Y	50 45.62	01 20.14	93				
44	Nab Tower	B	50 40.08	00 57.15	94				
45	Navigate Solutions	Y	50 45.97	01 19.45	95				
46	Needles Fairway	RW	50 38.24	01 38.98	96				
47	Needles Lighthouse	RW	50 39.73	01 35.52	97				
48	New Grounds	BYB	50 41.84	00 58.49	98				
49	No Mans Land Fort	B	50 44.40	01 05.70	99				
50	Norris	R	50 45.97	01 15.51					

Colour notation: Y Yellow
R Red
G Green

B Black
W White
O Orange

This is a selected list of commonly used marks. There are other marks in the Solent.

Positions listed are approximate.

Marks 91 onwards are available for local use.