



# Island Sailing Club Cowes, Isle of Wight

The Roy Castle Lung Cancer Foundation Charity Sail Regatta  
8th October 2011

Sponsored by Specialised Vehicle Services (SPS)

[www.guardships.com](http://www.guardships.com)



**Specialised  
Vessel  
Services**

## Sailing Instructions

### RULES

- 1.1 The regatta will be governed by the rules as defined in The Racing Rules of Sailing (RRS) together with, as appropriate:

The ISAF Offshore Special Regulations for Category 4, as amended by this notice.  
The IRC Rules Parts 1, 2 & 3 – including sail limitations.  
The Island Sailing Club Rating System (ISCRS)  
International Sonar Class Rules will not apply

- 1.2 Boats starting from Cowes shall keep a good look out for ferries and commercial traffic when starting across the Cowes harbour fairway as marked on BA chart 2793.

Rule 9 parts (b) and (d) of the International Collision Regulations should be complied with at all times as follows:

(b) A sailing vessel shall not impede the passage of a vessel which can safely navigate only within a narrow channel or fairway.

(d) A vessel shall not cross a narrow channel or fairway if such crossing impedes the passage of a vessel which can safely navigate only within such channel or fairway. The latter vessel may use the sound signal prescribed in Rule 34(d) if in doubt as to the intention of the crossing vessel.

Only the race committee may protest a boat under SI 1.2. This changes RRS 60.1.

**The ISC RIB may patrol the Harbour Fairway during the starting sequence.**

## 2 NOTICES TO COMPETITORS

Notices to competitors will be posted on the official notice board located at the Lower Marquee of the Island Sailing Club.

## 3 CHANGES TO SAILING INSTRUCTIONS

Any change to the sailing instructions will be posted before 0900 on the day it will take effect, except that any change to the schedule of races will be posted by 2000 on the day before it will take effect.

## 4 SIGNALS MADE ASHORE

4.1 Signals made ashore will be displayed at The Island Sailing Club main Flagstaff.

## 5 SCHEDULE OF RACES

5.1 All racing will be dependent on weather and tide conditions at the time of the regatta. The organising committee and the Island Sailing Club reserve the right to reschedule or cancel races should conditions dictate this to be appropriate.

5.2 Racing is scheduled to take place as follows:

Date	Class	Class Flag	Scheduled Warning Signal	Start Signal
Saturday 8th October	IRC	Numeral pennant 1	0955	1000
	ISCRS	Numeral pennant 2	1005	1010
	Sonar	Numeral pennant 3	1015	1020
	Sunsail F40	Numeral pennant 4	1025	1030
Races 2 and 3 will start as soon as possible after all boats in a class have finished. Therefore the starting sequence for subsequent races may be different from the 1st race.				

## 6 CLASS FLAGS

All Boats (except Sonars and Sunsail F40's) are requested to fly their Class Flag from their backstay

Class	Class Flag
IRC	Numeral pennant 1
ISCRS	Numeral pennant 2
Sonar	Numeral pennant 3
Sunsail F40	Numeral pennant 4

## 7 RACING AREAS

7.1 Racing will be conducted in the central Solent. Competitors will ensure they carry accurate charts or other suitable navigation equipment for this area.

## **8 COURSES**

- 8.1 The course to be sailed will consist of fixed marks which have been allocated code letters, numbers and symbols as listed at the back of these Sailing Instructions, and on the ISC website:  
[www.islandsc.org.uk/racingdocuments.aspx](http://www.islandsc.org.uk/racingdocuments.aspx)
- 8.2 RRS 27.1 is changed in that courses for all fleets may be broadcast on VHF radio channel 37A (M). In the event of a discrepancy between the course displayed on the course frame and that given by radio, the course frame will prevail.
- 8.3 RRS 27.1 is further changed in that the course to be sailed and the number of rounds will be displayed from the club rooftop course frame at or immediately after the warning signal by exhibiting the symbols for the buoys in the order of rounding.
- 8.4 The first board or boards shown will identify the class (shown as a Numeral Pennant hanging vertically on a green background). The subsequent boards indicate the course to be sailed:
- 8.5 An Orange or Red letter, number or symbol indicates the buoy shall be rounded to Port. A Yellow or Green letter, number or symbol indicates the buoy shall be rounded to Starboard.
- 8.6 When 2 or 3 diamonds are shown, the sequence displayed before the diamonds shall be sailed 2 or 3 times respectively; then continued to any mark(s) shown after the diamonds.
- 8.7 Direction of Start  
If starting to Westward a Green Flag will be flown from the Club Flagstaff.  
If starting to the Eastward a Red Flag will be flown from the Club Flagstaff.

## **9 MARKS**

- 9.1 Marks used will be fixed navigation buoys or racing marks chosen from the document *Course Marks and Symbols* as shown at the end of these Sailing instructions or downloadable from: [www.islandsc.org.uk/racingdocuments.aspx](http://www.islandsc.org.uk/racingdocuments.aspx)

## **10 AREAS THAT ARE OBSTRUCTIONS**

The following areas are designated as obstructions:

- 10.1 Boats must not anchor or kedge within the area between Stone Point and Gurnard Bay as indicated on the SCRA racing chart Admiralty Chart 2040. Gas and water pipes, telephone cables and electricity cables carrying 133,000 volts lie on the surface of the sea bed.
- 10.2 Boats in whatever direction they are racing shall not pass to the north of:
- 10.2.1 Horse Sand Fort.
- 10.2.2 The obstructions on the row of iron piles off Durns Point, east of Lymington.

10.3 The 'Moving Prohibited Zone' referred to in Associated British Ports Byelaw 11 shall rank as an obstruction to boats racing as shown at the end of these Sailing Instructions.

## 11 THE START

11.1 Races will be started by using rule 26 with the warning signal made 5 minutes before the starting signal.

Warning Signal	Class Flag displayed	5 mins before the start	1 Sound signal
Preparatory Signal	Blue Peter displayed (International Code Flag P)	4 mins before the start	1 Sound signal
	Blue Peter removed	1 min before the start	1 Sound signal
Start	Class Flag removed	Start	1 Sound signal

11.2 The starting line is the extension of a line through the two club flag staffs, each bearing an orange panel with a black cross.

11.3 The Outer Distance Mark (ODM) is a **BLACK** inflatable buoy. If it is not laid the ODM will be the **yellow** cylindrical Trinity House Mooring Buoy.

11.4 The Inner Distance Mark (IDM) if laid, is a **BLACK** inflatable buoy, at the southern end of the line. When starting, boats shall pass between the IDM and ODM.

11.5 When either the ODM or the IDM is on the pre-start side of the line, boats shall start between the points of the line nearest to the ODM and IDM.

## 12 THE FINISH

12.1 The Finish Line, which is not the same as the start line, is defined as the line between the Island Sailing Club Rear Flagstaff and the yellow cylindrical Trinity House Mooring Buoy.

## 13 PENALTY SYSTEM

13.1 Penalties, as prescribed in RRS 44.1 and 44.2 will apply.

## 14 TIME LIMIT

14.1 The Time limit for the first boat to finish is shown in this table and applies to each race.

Class	Time Limit
IRC ISCRS Sonar Sunsail F40	2hrs

- 14.2 Boats failing to finish within 30 minutes after the first boat sails the course and finishes, in each class, will be scored Did Not Finish without a hearing. This changes rules 35, A4 and A5.

## **15 PROTESTS AND REQUESTS FOR REDRESS**

- 15.1 Protest forms are available at the race office, located at Island Sailing Club. Protests and requests for redress or reopening shall be delivered there within the appropriate time limit.
- 15.2 For each class, the Protest Time Limit is 90 minutes after the last boat has finished the last race of the day.
- 15.3 Protest Hearings will be held in the Centenary Room, located at Island Sailing Club.

## **16 SCORING**

- 16.1 The Low Point Scoring system will be used.
- 16.2 2 races are required to be completed to constitute the series.
- 16.3 All races to count for series points – there will be no discards.

## **17 SAFETY**

- 17.1 A boat that retires from a race shall notify the race committee as soon as possible either by VHF on 37A (M) or by phone to the ISC Race box on 01983 249436

## **18 RADIO COMMUNICATION**

- 18.1 Except in an emergency, a boat shall neither make radio transmissions while racing nor receive radio communications not available to all boats. This restriction also applies to mobile telephones.
- 18.2 The Race Committee will broadcast to the fleet on VHF channel 37A (M)

## **19 PRIZES**

Prizes will be presented at the prize giving ceremony which will be at the Island SC during the evening. Tickets for the Curry Supper must be booked in advance.

## **20 DISCLAIMER OF LIABILITY**

- 20.1 Competitors participate in the regatta entirely at their own risk. See rule 4, Decision to Race. The organizing authority will not accept any liability for material damage or personal injury or death sustained in conjunction with or prior to, during, or after the regatta.

## **21 INSURANCE**

Each participating boat shall be insured with valid third-party liability insurance with a minimum cover of £2 Million per event or the equivalent.

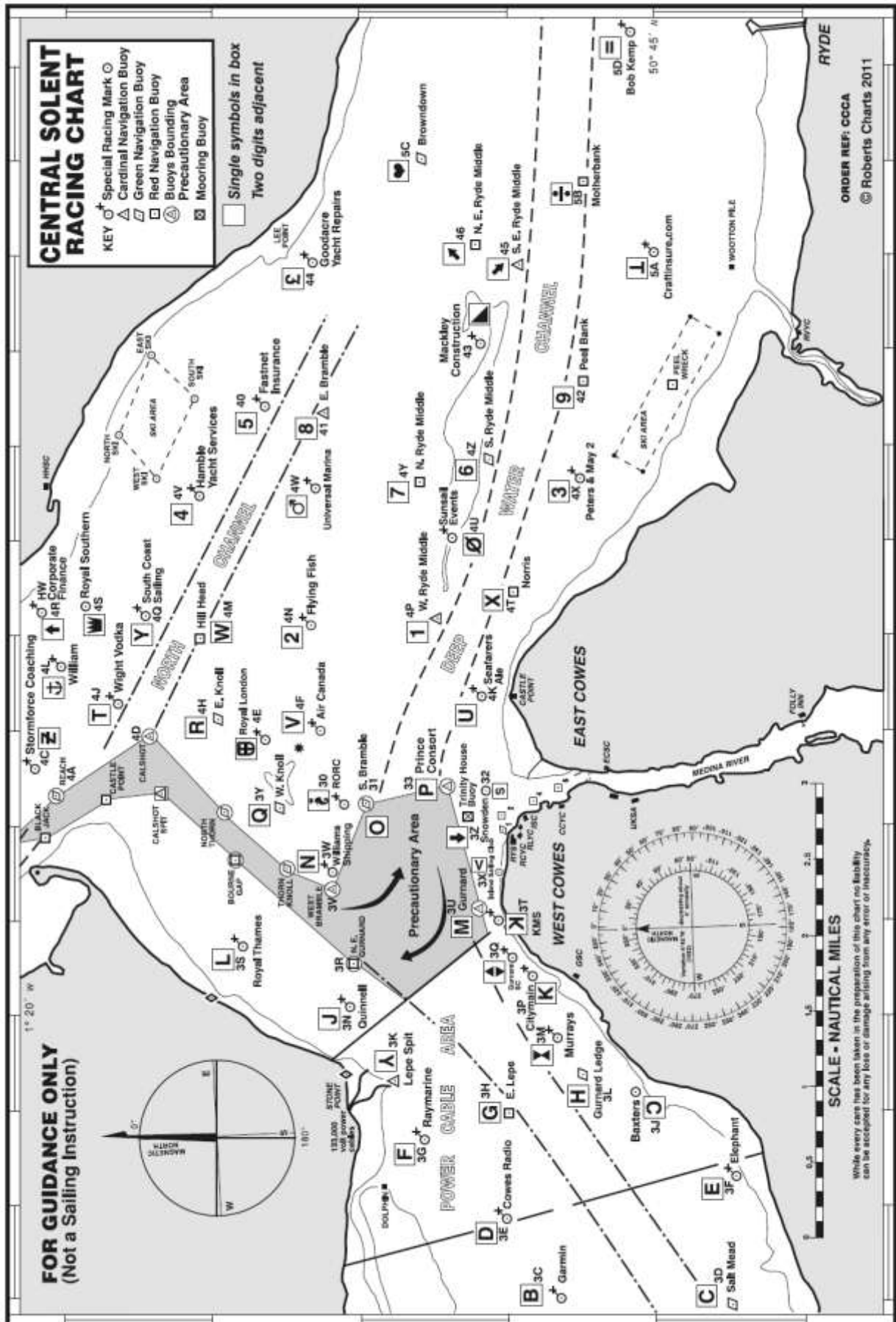
**ADDITIONAL**

The Committee and Members of the Island Sailing Club hope that skippers, crews and families of competing yachts will consider themselves temporary members of the ISC for the duration of the event and make use of the Club's facilities.

Competitors should note that the ISC implements the RYA Racing Charter and competitors will be required to undertake to sail in compliance with the Charter, which can be found at the front of the RYA Racing Rules of Sailing book or at [www.rya.org.uk/racing/charter](http://www.rya.org.uk/racing/charter)

# ATTACHMENT A

Racing areas (3 pages)



# ATTACHMENT B

## COURSE MARKS AND SYMBOLS

<b>T</b>	BW Moorings	<b>N</b>	Williams Shipping	<b>▼</b>	Aquaspec	<b>▼</b>	Laid Leeward Mark
<b>U</b>	Wadworth	<b>O</b>	S. Bramble	<b>£</b>	Goodacre Yacht Repairs	<b>◀</b>	Laid Gybe or Wing Mark
<b>●</b>	George Hotel	<b>P</b>	Prince Consort	<b>↕</b>	Gurnard SC	<b>+</b>	Outer Distance Mark (Laid inflatable)
<b>%</b>	Berthon	<b>Q</b>	W. Knoll	<b>⌘</b>	Murrays	<b>⦿</b>	Repeat
<b>★</b>	Folkboats UK	<b>R</b>	E. Knoll	<b>↘</b>	S. E. Ryde Middle	<b>↕</b>	Two Times
<b>€</b>	Solent Bank	<b>S</b>	Snowden	<b>↗</b>	N. E. Ryde Middle	<b>⬢</b>	Three Times
<b>\$</b>	Hampstead Ledge	<b>T</b>	Wight Vodka	<b>♥</b>	Browndown	<b>#</b>	Start/Finish Line
<b>⊗</b>	Quod Possumus!	<b>L</b>	Craftinsure.com	<b>÷</b>	Motherbank	<b>⦿</b>	Leeward Gate
<b>A</b>	W. Lepe	<b>U</b>	Seafarers Ale	<b>=</b>	Bob Kemp	<b>↕</b>	Windward Spreader Mark
<b>B</b>	Garmin	<b>V</b>	Air Canada	<b>↑</b>	HW Corporate Finance	<b>⤴</b>	Leeward Spreader Mark
<b>C</b>	Salt Mead	<b>W</b>	Hill Head	<b>?</b>	RORC		
<b>C</b>	Baxters	<b>X</b>	Norris	<b>⊞</b>	Royal London		
<b>D</b>	Cowes Radio	<b>Y</b>	South Coast Sailing	<b>⚓</b>	Royal Southern		
<b>E</b>	Elephant	<b>A</b>	Lepe Spit	<b>⚓</b>	William		
<b>E</b>	eDigitalResearch	<b>Z</b>	Stormforce Coaching	<b>♀</b>	Coronation		
<b>F</b>	Raymarine	<b>1</b>	W. Ryde Middle	<b>♂</b>	Key Yachting		
<b>G</b>	E. Lepe	<b>2</b>	Flying Fish	<b>⊞</b>	Darling Associates		
<b>H</b>	Gurnard Ledge	<b>3</b>	Peters & May 2	<b>♂</b>	Universal Marina		
<b>J</b>	Quinnell	<b>4</b>	Hamble Yacht Services	<b>∅</b>	Sunsail Events		
<b>Γ</b>	Paul Jackson	<b>5</b>	Fastnet Insurance	<b>◆</b>	RNC & RAYC		
<b>K</b>	Citymain	<b>6</b>	S. Ryde Middle	<b>&amp;</b>	Gleeds		
<b>K</b>	Kingston Marine Services (KMS)	<b>7</b>	N. Ryde Middle	<b>⬆</b>	North Sturbridge		
<b>L</b>	Royal Thames	<b>8</b>	E. Bramble	<b>↓</b>	Trinity House Buoy		
<b>T</b>	Lymington Bank	<b>9</b>	Peel Bank	<b>◀</b>	Island Sailing Club (Mark Off Green)		
<b>M</b>	Gurnard	<b>▲</b>	Mackley Construction	<b>▲</b>	Laid Windward Mark		

### MARKS OUTSIDE SOLENT

<b>▲</b>	North Head Buoy	50°42'N 01°35'W
<b>≡</b>	LB Barnes Ingram	50°41'N 01°41'W
<b>↖</b>	Christchurch Ledge Buoy	50°41'N 01°41'W
<b>⊞</b>	Poole Bar Buoy (No1)	50°39'N 01°52'W
<b>Σ</b>	S. W. Shingles Buoy	50°35'N 01°37'W
<b>↖</b>	Needles Fairway Buoy	50°35'N 01°36'W
<b>♣</b>	Wamer Buoy	50°43'N 01°09'W
<b>—</b>	Bembridge Ledge Buoy	50°41'N 01°25'W
<b>▼</b>	Winner Buoy	50°46'N 01°00'W
<b>↕</b>	New Grounds Buoy	50°46'N 05°55'W
<b>↔</b>	W. Princessa Buoy	50°40'N 01°08'W
<b>⊞</b>	Nab East Buoy	50°42'N 01°07'W
<b>□</b>	Nab Tower	50°40'N 05°71'W

MOST MARK POSITIONS ARE LISTED IN THE TWO DIGIT LIST

# ATTACHMENT C

## ABP Precautionary Area

