



The Island Sailing Club & East Cowes Sailing Club  
Jointly present  
The Autumn Series



A series of 5 Sunday morning races starting on September 11th 2011

# Notice of Race and Sailing Instructions

## 1 RULES

- 1.1 The regatta will be governed by the rules as defined in *The Racing Rules of Sailing*, together with the Island Sailing Club Rating System.
- 1.2 Boats starting from Cowes shall keep a good look out for ferries and commercial traffic when starting across the Cowes harbour fairway as marked on BA chart 2793. Rule 9 parts (b) and (d) of the International Collision Regulations should be complied with at all times as follows:
- (b) A sailing vessel shall not impede the passage of a vessel which can safely navigate only within a narrow channel or fairway.
- (d) A vessel shall not cross a narrow channel or fairway if such crossing impedes the passage of a vessel which can safely navigate only within such channel or fairway. The latter vessel may use the sound signal prescribed in Rule 34(d) if in doubt as to the intention of the crossing vessel.

**Only the race committee may protest a boat under SI 1.2. This changes RRS 60.1. The ISC RIB may patrol the Harbour Fairway during the starting sequence.**

## 2 ENTRY FEES and ELIGIBILITY

Entry fees are as follows:

	Series	Daily
ISC or ECSC Members	£25.00	£7.50
Non ISC or ECSC Members	£35.00	£10.00

- 2.1 Entry is open to Cruisers with, or applying for, an Island Sailing Club Rating. As well as Laser SB3's, ISC Sonars or other One Design Keelboats that can muster a minimum of 3 boats.
- 2.2 Boats racing the series must have completed an entry form and paid the correct fee to the ISC by 1700hrs on Wednesday 7<sup>th</sup> September
- 2.3 **Boats maybe issued with a temporary rating, to be used initially until completed ISCRS forms have been received and processed. At that point the temporary rating will be over written and earlier results recalculated.**

### 3 NOTICES TO COMPETITORS

Notices to competitors will be posted on the official notice board located at the Lower Marquee of the Island Sailing Club.

### 3 CHANGES TO SAILING INSTRUCTIONS

Any change to the sailing instructions will be posted before 0900 on the day it will take effect, except that any change to the schedule of races will be posted by 2000 on the day before it will take effect.

### 4 SIGNALS MADE ASHORE

4.1 Signals made ashore will be displayed at The Island Sailing Club main Flagstaff.

### 5 SCHEDULE OF RACES

5.1 Racing is scheduled to take place on the following Sundays:

Date
11th September
18th September
25th September
9th October
16th October

### 6 CLASSES

6.1 Entry is open to Cruisers with, or applying for, an Island Sailing Club Rating. As well as Laser SB3's, ISC Sonars or other One Design Keelboats that can muster a minimum of 3 boats.

6.2 Class flags and scheduled warning signal times will be:

<i>Class</i>	<i>Flag</i>	<i>Warning</i>	<i>Start</i>
ISCRS Fast handicap	Int. Code Flag 1	1010	1015
ISCRS Slow Handicap	Int. Code Flag 2	1015	1020
One Design fleet	Int. Code Flag 3	1020	1025

6.3 The Organising Committee will meet on 8<sup>th</sup> September when Fast & Slow handicap fleet splits will be made. Entrants will be informed which class they will be racing in by email later the same day.

6.4 To aid identification boats are requested to fly the correct class flag on their backstay.

### 7 RACING AREAS

The Racing Area will be the Central Solent. As seen in Attachment A

### 8 THE COURSE

8.1 The course to be sailed will consist of fixed Solent marks which have been allocated code letters, numbers and symbols as listed at the back of these Sailing Instructions, and on the ISC website: [www.islandsc.org.uk/racingdocuments.aspx](http://www.islandsc.org.uk/racingdocuments.aspx)

8.2 RRS 27.1 is changed in that courses for all fleets may be broadcast on VHF radio channel 37A (M). In the event of a discrepancy between the course displayed on the course frame and that given by radio, the course frame will prevail.

### 8.3 Direction of Start

If starting to Westward a Green Flag will be flown from the Club Flagstaff.

If starting to the Eastward a Red Flag will be flown from the Club Flagstaff.

8.4 RRS 27.1 is further changed in that the course to be sailed and the number of rounds will be displayed from the club rooftop course frame at or immediately after the preparatory signal for the class concerned by exhibiting the symbols for the buoys in the order of rounding.

8.5 The first board shown will identify the class (shown as a Numeral Pennant hanging vertically on a green background). The subsequent boards indicate the course to be sailed:

An Orange or Red letter, number or symbol indicates the buoy shall be rounded to Port.

A Yellow or Green letter, number or symbol indicates the buoy shall be rounded to Starboard.

## 9 MARKS

9.1 Marks used will be fixed navigation buoys or racing marks chosen from the document *Course Marks and Symbols* as shown at the end of these Sailing instructions or downloadable from: [www.islandsc.org.uk/racingdocuments.aspx](http://www.islandsc.org.uk/racingdocuments.aspx)

## 10 AREAS THAT ARE OBSTRUCTIONS

The following areas are designated as obstructions:

10.1 Boats must not anchor or kedge within the area between Stone Point and Gurnard Bay as indicated on the SCRA racing chart Admiralty Chart 2040. Gas and water pipes, telephone cables and electricity cables carrying 133,000 volts lie on the surface of the sea bed.

10.2 Boats in whatever direction they are racing shall not pass to the north of:

10.2.1 Horse Sand Fort.

10.2.2 The obstructions on the row of iron piles off Durns Point, east of Lymington.

10.3 The 'Moving Prohibited Zone' referred to in Associated British Ports Byelaw 11 shall rank as an obstruction to boats racing as shown at the end of these Sailing Instructions.

## 11 THE START

11.1 Races will be started by using rule 26 with the warning signal made 5 minutes before the starting signal.

Warning Signal	Class Flag displayed	5 mins before the start	1 Sound signal
Prep Signal	Blue Peter displayed (Int. Code Flag P)	4 mins before the start	1 Sound signal
	Blue Peter removed (Int. Code Flag P)	1 min before the start	1 Sound signal
Start	Class Flag removed	Start	1 Sound signal

11.2 The starting line is the extension of a line through the two club flag staffs, each bearing an orange panel with a black cross.

- 11.3 The Outer Distance Mark (ODM) is a **BLACK** inflatable buoy. If it is not laid the ODM will be the **yellow** cylindrical Trinity House Mooring Buoy.
- 11.4 The Inner Distance Mark (IDM) if laid, is a **BLACK** inflatable buoy, at the southern end of the line. When starting, boats shall pass between the IDM and ODM.
- 11.5 When either the ODM or the IDM is on the pre-start side of the line, boats shall start between the points of the line nearest to the ODM and IDM.
- 11.6 Sound signals will be made by electric hooter – no cannons will be fired

**12 THE FINISH**

- 12.1 The Finish Line, which is not the same as the start line, is defined as the line between the Island Sailing Club Rear Flagstaff and the yellow cylindrical Trinity House Mooring Buoy.
- 12.2 When boats cross the finish a flash of light may be seen from the ISC roof top race box.

**13 PENALTY SYSTEM**

- 13.1 The Scoring Penalty, rule 44.1, will apply.

**14 TIME LIMIT**

- 14.1 Time limits for the first boat in each class is as follows:

<i>Class</i>	<i>Time Limit</i>
All Classes	2hrs

- 14.2 Boats failing to finish within 30 mins after the first boat sails the course and finishes will be scored Did Not Finish without a hearing. This changes rules 35, A4 and A5.

**15 PROTESTS AND REQUESTS FOR REDRESS**

- 15.1 Protest forms are available at the race office, located at Island Sailing Club. Protests and requests for redress or reopening shall be delivered there within the appropriate time limit.
- 15.2 For each class, the protest time limit is 90 minutes after the last boat has finished the last race of the day.
- 15.3 Protest Hearings will be held in the Centenary Room, located at Island Sailing Club.

**16 SCORING**

- 16.1 The Low Point Scoring system will be used.
- 16.2 2 races are required to be completed to constitute a series.
- 16.3 All races to count for Series scoring
- 16.4 If five races are completed, then one discard will be applied

## **17 SAFETY REGULATIONS**

- 17.1 A boat that retires from a race shall notify the race committee as soon as possible.
- 17.2 All one design boats must wear adequate personal buoyancy at all times whilst racing

## **18 RADIO COMMUNICATION**

- 18.1 Except in an emergency, a boat shall neither make radio transmissions while racing nor receive radio communications not available to all boats. This restriction also applies to mobile telephones.
- 18.2 The Race Committee will make broadcasts to the fleet on VHF channel 37A (M).
- 18.3 The Race Committee may also broadcast a time check at 0945 on VHF channel 37A (M) and any other information of interest to competitors.

## **19 PRIZES**

Prizes will be presented at the prize giving ceremony which will be at the ISC at 1500hrs on 16<sup>th</sup> October

## **20 DISCLAIMER OF LIABILITY**

Competitors participate in the regatta entirely at their own risk. See rule 4, Decision to Race. The organizing authority will not accept any liability for material damage or personal injury or death sustained in conjunction with or prior to, during, or after the regatta.

## **21 INSURANCE**

Each participating boat shall be insured with valid third-party liability insurance with a minimum cover of £2 Million per event or the equivalent.

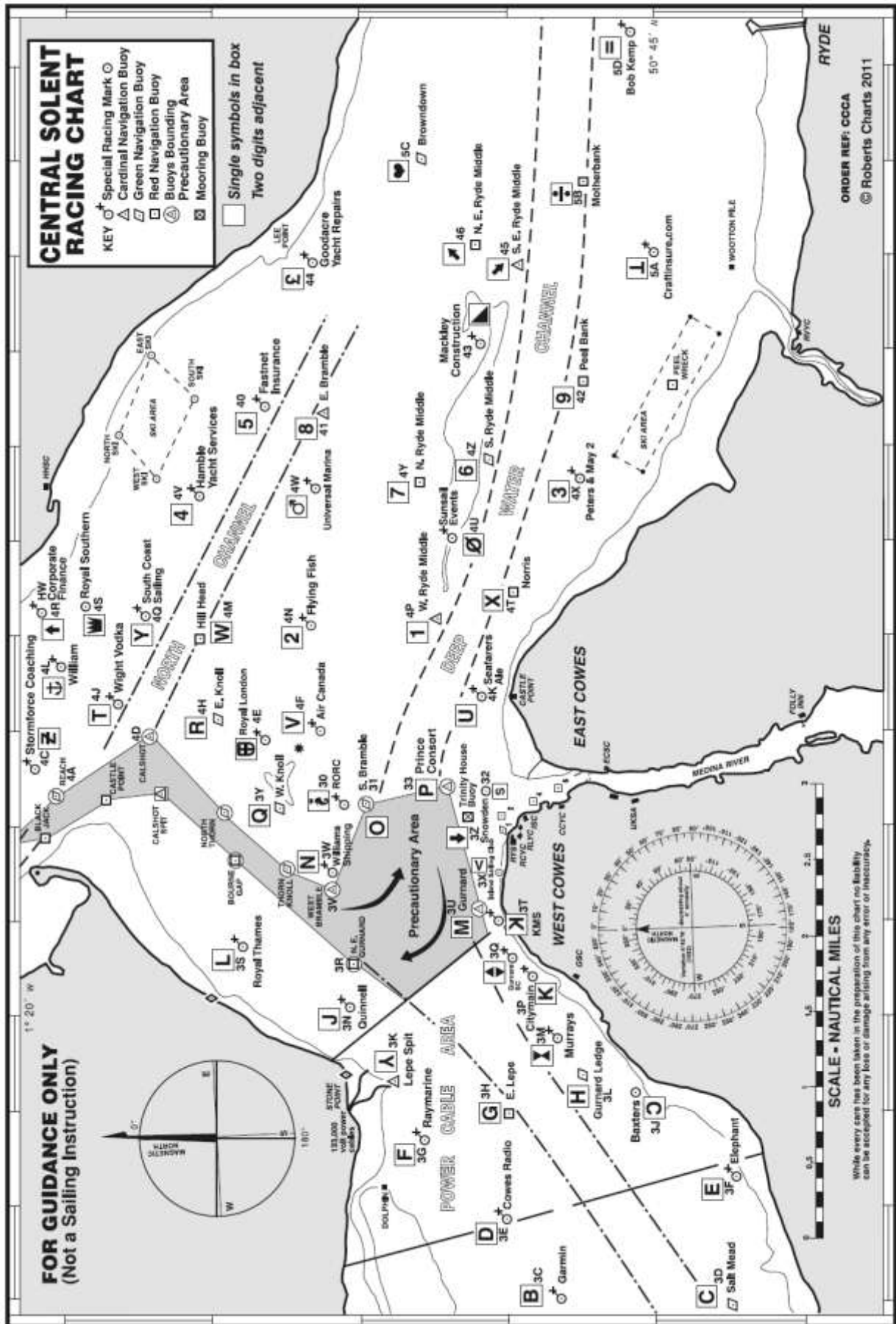
## **22 ADDITIONAL**

All competitors are welcome back at the Island Sailing club after racing.

Competitors should note that the ISC and ECSC follow the RYA Racing Charter and competitors will be required to undertake to sail in compliance with the Charter, which can be found at the front of the RYA Racing Rules of Sailing book or at [www.rya.org.uk/racing/charter](http://www.rya.org.uk/racing/charter)

# ATTACHMENT A

Racing area



# ATTACHMENT B

## COURSE MARKS AND SYMBOLS

<b>T</b>	BW Moorings	<b>N</b>	Williams Shipping	<b>▼</b>	Aquaspec	<b>▼</b>	Laid Leeward Mark
<b>U</b>	Wadworth	<b>O</b>	S. Bramble	<b>£</b>	Goodacre Yacht Repairs	<b>◀</b>	Laid Gybe or Wing Mark
<b>●</b>	George Hotel	<b>P</b>	Prince Consort	<b>↕</b>	Gurnard SC	<b>+</b>	Outer Distance Mark (Laid inflatable)
<b>%</b>	Berthon	<b>Q</b>	W. Knoll	<b>⌘</b>	Murrays	<b>⦿</b>	Repeat
<b>★</b>	Folkboats UK	<b>R</b>	E. Knoll	<b>↘</b>	S. E. Ryde Middle	<b>↕</b>	Two Times
<b>€</b>	Solent Bank	<b>S</b>	Snowden	<b>↗</b>	N. E. Ryde Middle	<b>⦿</b>	Three Times
<b>\$</b>	Hampstead Ledge	<b>T</b>	Wight Vodka	<b>♥</b>	Brown-down	<b>#</b>	Start/Finish Line
<b>⊗</b>	Quod Possumus!	<b>L</b>	Craftinsure.com	<b>÷</b>	Motherbank	<b>⦿</b>	Leeward Gate
<b>A</b>	W. Lepe	<b>U</b>	Seafarers Ale	<b>=</b>	Bob Kemp	<b>↕</b>	Windward Spreader Mark
<b>B</b>	Garmin	<b>V</b>	Air Canada	<b>↑</b>	HW Corporate Finance	<b>⤴</b>	Leeward Spreader Mark
<b>C</b>	Salt Mead	<b>W</b>	Hill Head	<b>?</b>	RORC		
<b>C</b>	Baxters	<b>X</b>	Norris	<b>⊞</b>	Royal London		
<b>D</b>	Cowes Radio	<b>Y</b>	South Coast Sailing	<b>⚓</b>	Royal Southern		
<b>E</b>	Elephant	<b>A</b>	Lepe Spit	<b>⚓</b>	William		
<b>E</b>	eDigitalResearch	<b>Z</b>	Stormforce Coaching	<b>♀</b>	Coronation		
<b>F</b>	Raymarine	<b>1</b>	W. Ryde Middle	<b>♂</b>	Key Yachting		
<b>G</b>	E. Lepe	<b>2</b>	Flying Fish	<b>⊞</b>	Darling Associates		
<b>H</b>	Gurnard Ledge	<b>3</b>	Peters & May 2	<b>♂</b>	Universal Marina		
<b>J</b>	Quinnell	<b>4</b>	Hamble Yacht Services	<b>∅</b>	Sunsail Events		
<b>I</b>	Paul Jackson	<b>5</b>	Fastnet Insurance	<b>◆</b>	RNC & RAYC		
<b>K</b>	Citymain	<b>6</b>	S. Ryde Middle	<b>&amp;</b>	Gleeds		
<b>K</b>	Kingston Marine Services (KMS)	<b>7</b>	N. Ryde Middle	<b>⤴</b>	North Sturbridge		
<b>L</b>	Royal Thames	<b>8</b>	E. Bramble	<b>↓</b>	Trinity House Buoy		
<b>T</b>	Lymington Bank	<b>9</b>	Peel Bank	<b>◀</b>	Island Sailing Club (Mark Off Green)		
<b>M</b>	Gurnard	<b>▲</b>	Mackley Construction	<b>▲</b>	Laid Windward Mark		

### MARKS OUTSIDE SOLENT

<b>▲</b>	North Head Buoy	50°42'N 01°35'W
<b>≡</b>	LB Barnes Ingram	50°41'N 01°41'W
<b>↖</b>	Christchurch Ledge Buoy	50°41'N 01°41'W
<b>⊞</b>	Poole Bar Buoy (No1)	50°39'N 01°52'W
<b>Σ</b>	S. W. Shingles Buoy	50°39'N 01°37'W
<b>↖</b>	Needles Fairway Buoy	50°38'N 01°56'W
<b>♣</b>	Wamer Buoy	50°43'N 01°09'W
<b>—</b>	Bembridge Ledge Buoy	50°41'N 01°29'W
<b>▼</b>	Winner Buoy	50°46'N 01°00'W
<b>↕</b>	New Grounds Buoy	50°46'N 05°55'W
<b>↔</b>	W. Princessa Buoy	50°40'N 01°08'W
<b>⊞</b>	Nab East Buoy	50°42'N 01°07'W
<b>□</b>	Nab Tower	50°40'N 05°7'W

MOST MARK POSITIONS ARE LISTED IN THE TWO DIGIT LIST

